

Datasheet for ABIN359583  
**anti-PTRF antibody (C-Term)**



[Go to Product page](#)

1 Image

## Overview

Quantity:	0.4 mL
Target:	PTRF
Binding Specificity:	C-Term
Reactivity:	Human
Host:	Rabbit
Clonality:	Polyclonal
Conjugate:	This PTRF antibody is un-conjugated
Application:	Western Blotting (WB), Enzyme Immunoassay (EIA)

## Product Details

Immunogen:	This antibody is generated from rabbits immunized with a KLH conjugated synthetic peptide selected from the C-terminal region of human PTRF.
Isotype:	Ig Fraction
Specificity:	This antibody reacts to PTRF.
Purification:	Prepared by Saturated Ammonium Sulfate (SAS) precipitation followed by dialysis against PBS

## Target Details

Target:	PTRF
Alternative Name:	PTRF ( <a href="#">PTRF Products</a> )
Background:	Termination of transcription by RNA polymerase I involves pausing of transcription by TTF1,

## Target Details

and the dissociation of the transcription complex, releasing pre-rRNA and RNA polymerase I from the template. PTRF is required for dissociation of the ternary transcription complex. Synonyms: Cavin-1, FKSG13, Polymerase I and transcript release factor

Gene ID: 284119, 9606

UniProt: [Q6NZI2](#)

## Application Details

Application Notes: ELISA: 1/1,000. Western blotting: 1/50 - 1/100.  
Other applications not tested.  
Optimal dilutions are dependent on conditions and should be determined by the user.

Restrictions: For Research Use only

## Handling

Format: Liquid

Concentration: 0.25 mg/mL

Buffer: PBS with 0.09 % (W/V) sodium azide

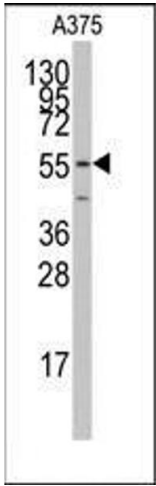
Preservative: Sodium azide

Precaution of Use: This product contains sodium azide: a POISONOUS AND HAZARDOUS SUBSTANCE which should be handled by trained staff only.

Handling Advice: Avoid repeated freezing and thawing.

Storage: 4 °C/-20 °C

Storage Comment: Store the antibody undiluted at 2-8 °C for one month or (in aliquots) at -20 °C for longer.



Western Blotting

**Image 1.** Western blot analysis of anti-PTRF Antibody (N-term) Pab in A375 cell line lysates (35ug/lane). PTRF(arrow) was detected using the purified Pab.