

Datasheet for ABIN359588
anti-BPIL1 antibody (N-Term)



[Go to Product page](#)

1 Image

Overview

Quantity:	0.4 mL
Target:	BPIL1 (BPIFB2)
Binding Specificity:	AA 93-122, N-Term
Reactivity:	Human
Host:	Rabbit
Clonality:	Polyclonal
Conjugate:	This BPIL1 antibody is un-conjugated
Application:	Western Blotting (WB), Enzyme Immunoassay (EIA)

Product Details

Immunogen:	KLH conjugated synthetic peptide between 93~122 amino acids from the N-terminal region of Human BPIL1.
Isotype:	Ig Fraction
Specificity:	This antibody recognizes Human BPIL1 (N-term).
Purification:	Prepared by Saturated Ammonium Sulfate (SAS) precipitation followed by dialysis against PBS

Target Details

Target:	BPIL1 (BPIFB2)
Alternative Name:	BPIL1 (BPIFB2 Products)
Background:	BPIL1 is a member of the lipid transfer/lipopolysaccharide binding protein (LT/LBP) family. This

Target Details

protein is highly expressed in hypertrophic tonsils. Synonyms: Bactericidal/permeability-increasing protein-like 1, C20orf184, LPLUNC2, Long palate, RYSR, lung and nasal epithelium carcinoma-associated protein 2

Gene ID: 80341, 9606

UniProt: [Q8N4F0](#)

Application Details

Application Notes: ELISA: 1/1,000. Western blotting: 1/50 - 1/100.
Other applications not tested.
Optimal dilutions are dependent on conditions and should be determined by the user.

Restrictions: For Research Use only

Handling

Format: Liquid

Concentration: 0.25 mg/mL

Buffer: PBS containing 0.09 % (W/V) Sodium Azide as preservative

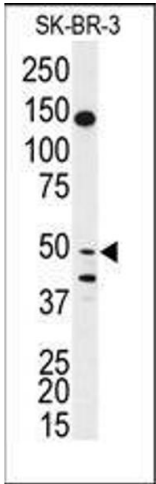
Preservative: Sodium azide

Precaution of Use: This product contains sodium azide: a POISONOUS AND HAZARDOUS SUBSTANCE which should be handled by trained staff only.

Handling Advice: Avoid repeated freezing and thawing.

Storage: 4 °C/-20 °C

Storage Comment: Store undiluted at 2-8 °C for one month or (in aliquots) at -20 °C for longer.



Western Blotting

Image 1. Western blot analysis of anti-BPIL1 Antibody (N-term) Cat.-No AP14072PU-N in SK-BR-3 cell line lysates (35ug/lane). BPIL1 (arrow) was detected using the purified Pab.