

Datasheet for ABIN359598
anti-HIBCH antibody (Middle Region)



[Go to Product page](#)

2 Images

Overview

Quantity:	0.4 mL
Target:	HIBCH
Binding Specificity:	Middle Region
Reactivity:	Human
Host:	Rabbit
Clonality:	Polyclonal
Conjugate:	This HIBCH antibody is un-conjugated
Application:	Western Blotting (WB), Enzyme Immunoassay (EIA)

Product Details

Immunogen:	This antibody is generated from rabbits immunized with a KLH conjugated synthetic peptide selected from the Center region of human HIBCH.
Isotype:	Ig Fraction
Specificity:	This antibody reacts to HIBCH.
Purification:	Prepared by Saturated Ammonium Sulfate (SAS) precipitation followed by dialysis against PBS

Target Details

Target:	HIBCH
Alternative Name:	HIBCH (HIBCH Products)
Background:	HIBCH is responsible for the specific hydrolysis of HIBYL-CoA, a valine catabolite, as well as the

Target Details

hydrolysis of beta-hydroxypropionyl-CoA, an intermediate in a minor pathway of propionate metabolism. Synonyms: 3-hydroxyisobutyryl-CoA hydrolase, 3-hydroxyisobutyryl-coenzyme A hydrolase, HIB-CoA hydrolase, HIBYL-CoA-H

Gene ID: 26275, 9606

UniProt: [Q6NVY1](#)

Pathways: [Monocarboxylic Acid Catabolic Process](#)

Application Details

Application Notes: ELISA: 1/1,000. Western blotting: 1/50 - 1/100.
Other applications not tested.
Optimal dilutions are dependent on conditions and should be determined by the user.

Restrictions: For Research Use only

Handling

Format: Liquid

Concentration: 0.25 mg/mL

Buffer: PBS with 0.09 % (W/V) sodium azide

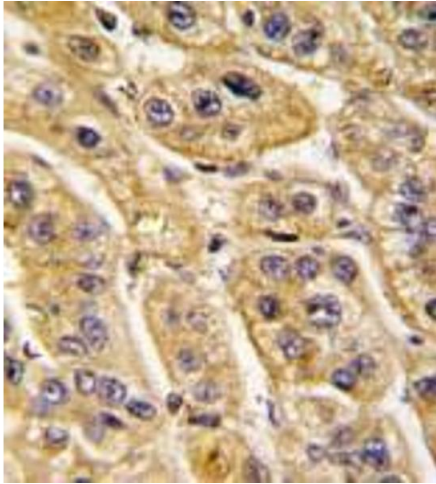
Preservative: Sodium azide

Precaution of Use: This product contains sodium azide: a POISONOUS AND HAZARDOUS SUBSTANCE which should be handled by trained staff only.

Handling Advice: Avoid repeated freezing and thawing.

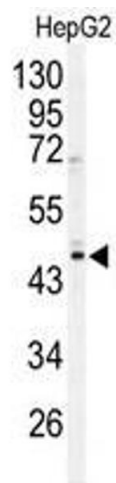
Storage: 4 °C/-20 °C

Storage Comment: Store the antibody undiluted at 2-8 °C for one month or (in aliquots) at -20 °C for longer.



Immunohistochemistry (Paraffin-embedded Sections)

Image 1. Formalin-fixed and paraffin-embedded human hepatocarcinoma tissue reacted with HIBCH antibody (Center), which was peroxidase-conjugated to the secondary antibody, followed by DAB staining. This data demonstrates the use of this antibody for immunohistochemistry; clinical relevance has not been evaluated.



Western Blotting

Image 2. Western blot analysis of HIBCH antibody (Center) in HepG2 cell line lysates (35ug/lane). HIBCH (arrow) was detected using the purified Pab.