

Datasheet for ABIN359601

anti-ADAMTS13 antibody (AA 836-866)[Go to Product page](#)**2** Images

Overview

Quantity:	0.4 mL
Target:	ADAMTS13
Binding Specificity:	AA 836-866
Reactivity:	Human
Host:	Rabbit
Clonality:	Polyclonal
Conjugate:	This ADAMTS13 antibody is un-conjugated
Application:	Western Blotting (WB), Immunohistochemistry (Paraffin-embedded Sections) (IHC (p)), Enzyme Immunoassay (EIA)

Product Details

Immunogen:	This antibody is generated from rabbits immunized with a KLH conjugated synthetic peptide between 836~866 amino acids from the center region of Human ADAMTS13.
Isotype:	Ig Fraction
Specificity:	This antibody recognizes ADAMTS13.
Purification:	Protein A Chromatography, followed by peptide affinity purification.

Target Details

Target:	ADAMTS13
Alternative Name:	ADAMTS13 (ADAMTS13 Products)

Target Details

Background: ADAMTS13 is a member of the ADAMTS (a disintegrin and metalloproteinase with thrombospondin motif) protein family. Members of the family share several distinct protein modules, including a propeptide region, a metalloproteinase domain, a disintegrin-like domain, and a thrombospondin type 1 (TS) motif. Individual members of this family differ in the number of C-terminal TS motifs, and some have unique C-terminal domains. The enzyme is the von Willebrand Factor (vWF)-cleaving protease, which is responsible for cleaving at the site of Tyr842-Met843 of the vWF molecule. A deficiency of this enzyme is associated with thrombotic thrombocytopenic purpura. **Synonyms:** A disintegrin and metalloproteinase with thrombospondin motifs 13, ADAM-TS13, ADAMTS-13, C9orf8, vWF-cleaving protease, von Willebrand factor-cleaving protease

Gene ID: 11093, 9606

UniProt: [Q76LX8](#)

Application Details

Application Notes: ELISA: 1/1,000. Western blotting: 1/50-1/100. Immunohistochemistry: 1/50-1/100.
Other applications not tested.
Optimal dilutions are dependent on conditions and should be determined by the user.

Restrictions: For Research Use only

Handling

Format: Liquid

Concentration: 0.25 mg/mL

Buffer: PBS with 0.09 % (W/V) Sodium Azide as preservative.

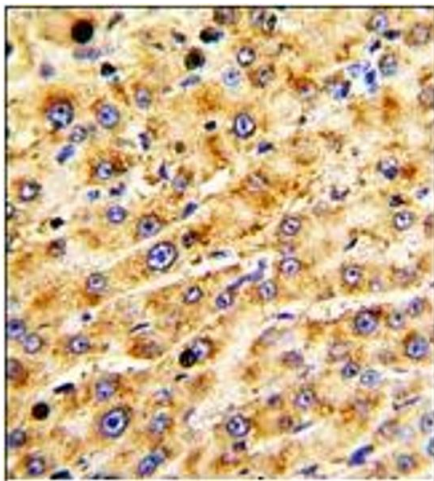
Preservative: Sodium azide

Precaution of Use: This product contains sodium azide: a POISONOUS AND HAZARDOUS SUBSTANCE which should be handled by trained staff only.

Handling Advice: Avoid repeated freezing and thawing.

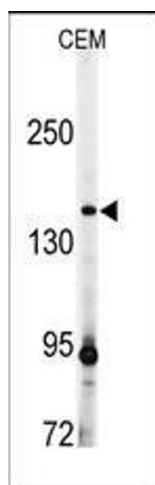
Storage: 4 °C/-20 °C

Storage Comment: Store the antibody undiluted at 2-8 °C for one month or (in aliquots) at -20 °C for longer.



Immunohistochemistry (Paraffin-embedded Sections)

Image 1. Immunohistochemistry: ADAMTS13 antibody staining of Formalin-Fixed Paraffin-Embedded Human hepatocarcinoma followed by peroxidase-conjugation to the secondary antibody and DAB staining.



Western Blotting

Image 2. Western blot analysis: ADAMTS13 antibody staining of CEM cell line lysates (35 µg/lane). ADAMTS13 (arrow) was detected using the purified Pab.