

Datasheet for ABIN359610
anti-SPRY4 antibody (C-Term)



[Go to Product page](#)

1 Image

Overview

Quantity:	0.4 mL
Target:	SPRY4
Binding Specificity:	C-Term
Reactivity:	Human
Host:	Rabbit
Clonality:	Polyclonal
Conjugate:	This SPRY4 antibody is un-conjugated
Application:	Western Blotting (WB), Enzyme Immunoassay (EIA)

Product Details

Immunogen:	This antibody is generated from rabbits immunized with a KLH conjugated synthetic peptide selected from the C-terminal region of human SPRY4.
Isotype:	Ig Fraction
Specificity:	This antibody reacts to SPRY4.
Purification:	Protein A column, followed by peptide affinity purification

Target Details

Target:	SPRY4
Alternative Name:	Sprouty Homolog 4 / SPRY4 (SPRY4 Products)
Background:	SPRY4 is an inhibitor of the receptor-transduced mitogen-activated protein kinase (MAPK)

Target Details

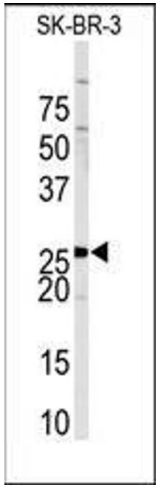
	signaling pathway. The protein is positioned upstream of RAS activation and impairs the formation of active GTP-RAS.Synonyms: Sprouty 4, Spry-4
Gene ID:	81848, 9606
UniProt:	Q9C004

Application Details

Application Notes:	ELISA: 1/1,000. Western blotting: 1/50 - 1/100. Other applications not tested. Optimal dilutions are dependent on conditions and should be determined by the user.
Restrictions:	For Research Use only

Handling

Format:	Liquid
Concentration:	0.25 mg/mL
Buffer:	PBS with 0.09 % (W/V) sodium azide
Preservative:	Sodium azide
Precaution of Use:	This product contains sodium azide: a POISONOUS AND HAZARDOUS SUBSTANCE which should be handled by trained staff only.
Handling Advice:	Avoid repeated freezing and thawing.
Storage:	4 °C/-20 °C
Storage Comment:	Store the antibody undiluted at 2-8 °C for one month or (in aliquots) at -20 °C for longer.



Western Blotting

Image 1. Western blot analysis of anti-SPRY4 Antibody (C-term) in Sk-Br-3 cell line lysates (35ug/lane). SPRY4 (arrow) was detected using the purified Pab.