



Datasheet for ABIN359616
anti-HNF4 gamma antibody (Middle Region)



[Go to Product page](#)

1 Image

Overview

Quantity:	0.4 mL
Target:	HNF4 gamma (HNF4G)
Binding Specificity:	Middle Region
Reactivity:	Human, Mouse
Host:	Rabbit
Clonality:	Polyclonal
Conjugate:	This HNF4 gamma antibody is un-conjugated
Application:	Western Blotting (WB), Enzyme Immunoassay (EIA)

Product Details

Immunogen:	This antibody is generated from rabbits immunized with a KLH conjugated synthetic peptide selected from the center region of human HNF4G.
Isotype:	Ig Fraction
Specificity:	This antibody reacts to HNF4G.
Purification:	Prepared by Saturated Ammonium Sulfate (SAS) precipitation followed by dialysis against PBS

Target Details

Target:	HNF4 gamma (HNF4G)
Alternative Name:	HNF4 gamma / NR2A2 (HNF4G Products)
Background:	HNF4G is a transcription factor. It has a lower transcription activation potential than HNF4-

Target Details

alpha.Synonyms: Hepatocyte nuclear factor 4-gamma, Nuclear receptor subfamily 2 group A member 2

Gene ID: 3174, 9606

UniProt: [Q14541](#)

Pathways: [Nuclear Receptor Transcription Pathway](#), [Steroid Hormone Mediated Signaling Pathway](#)

Application Details

Application Notes: ELISA: 1/1,000. Western blotting: 1/50 - 1/100.
Other applications not tested.
Optimal dilutions are dependent on conditions and should be determined by the user.

Restrictions: For Research Use only

Handling

Format: Liquid

Concentration: 0.25 mg/mL

Buffer: PBS with 0.09 % (W/V) sodium azide

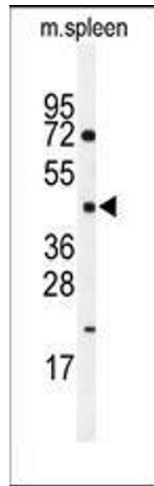
Preservative: Sodium azide

Precaution of Use: This product contains sodium azide: a POISONOUS AND HAZARDOUS SUBSTANCE which should be handled by trained staff only.

Handling Advice: Avoid repeated freezing and thawing.

Storage: 4 °C/-20 °C

Storage Comment: Store the antibody undiluted at 2-8 °C for one month or (in aliquots) at -20 °C for longer.



Western Blotting

Image 1. Western blot analysis of anti-HNF4G Antibody (Center) in mouse spleen lysates (35ug/lane). HNF4G (arrow) was detected using the purified Pab .