



Datasheet for ABIN359618

anti-Isocitrate Dehydrogenase antibody (Middle Region)



[Go to Product page](#)

2 Images

Overview

Quantity:	0.4 mL
Target:	Isocitrate Dehydrogenase (IDH)
Binding Specificity:	Middle Region
Reactivity:	Human
Host:	Rabbit
Clonality:	Polyclonal
Conjugate:	This Isocitrate Dehydrogenase antibody is un-conjugated
Application:	Western Blotting (WB), Enzyme Immunoassay (EIA)

Product Details

Immunogen:	This antibody is generated from rabbits immunized with a KLH conjugated synthetic peptide selected from the Center region of human IDH1.
Isotype:	Ig Fraction
Specificity:	This antibody reacts to IDH1.
Purification:	Prepared by Saturated Ammonium Sulfate (SAS) precipitation followed by dialysis against PBS

Target Details

Target:	Isocitrate Dehydrogenase (IDH)
Alternative Name:	Isocitrate Dehydrogenase / IDH (IDH Products)
Background:	IDH1 belongs to two distinct subclasses. The protein is the NADP(+)-dependent isocitrate

Target Details

dehydrogenase found in the cytoplasm and peroxisomes. This protein contains the PTS-1 peroxisomal targeting signal sequence. The presence of this enzyme in peroxisomes suggests roles in the regeneration of NADPH for intraperoxisomal reductions, such as the conversion of 2, 4-dienoyl-CoAs to 3-enoyl-CoAs, as well as in peroxisomal reactions that consume 2-oxoglutarate, namely the alpha-hydroxylation of phytanic acid. The cytoplasmic enzyme serves a significant role in cytoplasmic NADPH production. Synonyms: Cytosolic NADP-isocitrate dehydrogenase, ICDH, IDP, NADP(+)-specific ICDH, Oxalosuccinate decarboxylase, PICD, cytoplasmic Isocitrate dehydrogenase [NADP]

Gene ID: 3417, 9606

UniProt: [075874](#)

Application Details

Application Notes: ELISA: 1/1,000. Western blotting: 1/50 - 1/100.
Other applications not tested.
Optimal dilutions are dependent on conditions and should be determined by the user.

Restrictions: For Research Use only

Handling

Format: Liquid

Concentration: 0.25 mg/mL

Buffer: PBS with 0.09 % (W/V) sodium azide

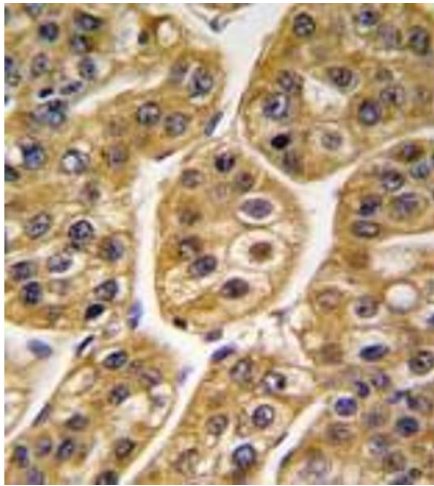
Preservative: Sodium azide

Precaution of Use: This product contains sodium azide: a POISONOUS AND HAZARDOUS SUBSTANCE which should be handled by trained staff only.

Handling Advice: Avoid repeated freezing and thawing.

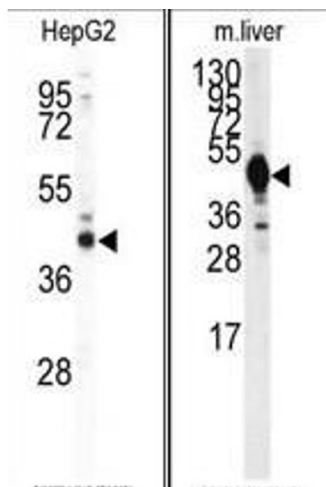
Storage: 4 °C/-20 °C

Storage Comment: Store the antibody undiluted at 2-8 °C for one month or (in aliquots) at -20 °C for longer.



Immunohistochemistry (Paraffin-embedded Sections)

Image 1. Formalin-fixed and paraffin-embedded human hepatocarcinoma tissue reacted with IDH1 antibody (Center), which was peroxidase-conjugated to the secondary antibody, followed by DAB staining. This data demonstrates the use of this antibody for immunohistochemistry; clinical relevance has not been evaluated.



Western Blotting

Image 2. (LEFT) Western blot analysis of IDH1 antibody (Center) in HepG2 cell line lysates (35ug/lane). IDH1 (arrow) was detected using the purified Pab. (RIGHT) Western blot analysis of IDH1 antibody (Center) in mouse liver tissue lysates (35ug/lane). IDH1(arrow) was detected using the purified Pab.