

Datasheet for ABIN359621
anti-EN2 antibody (C-Term)



[Go to Product page](#)

1 Image

Overview

Quantity:	0.4 mL
Target:	EN2
Binding Specificity:	C-Term
Reactivity:	Human, Mouse
Host:	Rabbit
Clonality:	Polyclonal
Conjugate:	This EN2 antibody is un-conjugated
Application:	Western Blotting (WB), Enzyme Immunoassay (EIA)

Product Details

Immunogen:	This antibody is generated from rabbits immunized with a KLH conjugated synthetic peptide selected from the C-terminal region of human EN2.
Isotype:	Ig Fraction
Specificity:	This antibody reacts to EN2.
Purification:	Prepared by Saturated Ammonium Sulfate (SAS) precipitation followed by dialysis against PBS

Target Details

Target:	EN2
Alternative Name:	Engrailed-2 / EN2 (EN2 Products)
Background:	EN2 is thought to have a role in controlling development. In Drosophila, the protein plays an

Target Details

important role during development in segmentation, where it is required for the formation of posterior compartments. Different mutations in the mouse homologs, En1 and En2, produced different developmental defects that frequently are lethal. This protein has been implicated in the control of pattern formation during development of the central nervous system. Synonyms: EN-2, Homeobox protein engrailed-2, Hu-En-2

Gene ID: 2020, 9606

UniProt: [P19622](#)

Application Details

Application Notes: ELISA: 1/1,000. Western blotting: 1/50 - 1/100.
Other applications not tested.
Optimal dilutions are dependent on conditions and should be determined by the user.

Restrictions: For Research Use only

Handling

Format: Liquid

Concentration: 0.25 mg/mL

Buffer: PBS with 0.09 % (W/V) sodium azide

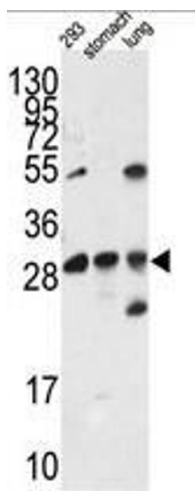
Preservative: Sodium azide

Precaution of Use: This product contains sodium azide: a POISONOUS AND HAZARDOUS SUBSTANCE which should be handled by trained staff only.

Handling Advice: Avoid repeated freezing and thawing.

Storage: 4 °C/-20 °C

Storage Comment: Store the antibody undiluted at 2-8 °C for one month or (in aliquots) at -20 °C for longer.



Western Blotting

Image 1. Western blot analysis of EN2 antibody (C-term) in 293 cell line lysates and mouse stomach and lung tissue lysates (35ug/lane). EN2 (arrow) was detected using the purified Pab.