



[Go to Product page](#)

Datasheet for ABIN359629
anti-KIF3C antibody (C-Term)

1 Image

Overview

Quantity:	0.4 mL
Target:	KIF3C
Binding Specificity:	C-Term
Reactivity:	Human
Host:	Rabbit
Clonality:	Polyclonal
Conjugate:	This KIF3C antibody is un-conjugated
Application:	Western Blotting (WB), Enzyme Immunoassay (EIA)

Product Details

Immunogen:	This antibody is generated from rabbits immunized with a KLH conjugated synthetic peptide selected from the C-terminal region of human KIF3C.
Isotype:	Ig Fraction
Specificity:	This antibody reacts to KIF3C.
Purification:	Prepared by Saturated Ammonium Sulfate (SAS) precipitation followed by dialysis against PBS

Target Details

Target:	KIF3C
Alternative Name:	KIF3C (KIF3C Products)
Background:	KIF3C is a microtubule-based anterograde translocator for membranous organelles.Synonyms:

Target Details

Kinesin-like protein KIF3C

Gene ID: 3797, 9606

UniProt: [O14782](#)

Pathways: [Hedgehog Signaling](#)

Application Details

Application Notes: ELISA: 1/1,000. Western blotting: 1/50 - 1/100.
Other applications not tested.
Optimal dilutions are dependent on conditions and should be determined by the user.

Restrictions: For Research Use only

Handling

Format: Liquid

Concentration: 0.25 mg/mL

Buffer: PBS with 0.09 % (W/V) sodium azide

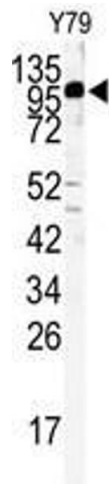
Preservative: Sodium azide

Precaution of Use: This product contains sodium azide: a POISONOUS AND HAZARDOUS SUBSTANCE which should be handled by trained staff only.

Handling Advice: Avoid repeated freezing and thawing.

Storage: 4 °C/-20 °C

Storage Comment: Store the antibody undiluted at 2-8 °C for one month or (in aliquots) at -20 °C for longer.



Western Blotting

Image 1. Western blot analysis of KIF3C antibody (C-term) in Y79 cell line lysates (35ug/lane). HGK (arrow) was detected using the purified Pab.