

Datasheet for ABIN359633  
**anti-MAPK4 antibody (C-Term)**[Go to Product page](#)

## 2 Images

## Overview

Quantity:	0.4 mL
Target:	MAPK4
Binding Specificity:	C-Term
Reactivity:	Human, Mouse
Host:	Rabbit
Clonality:	Polyclonal
Conjugate:	This MAPK4 antibody is un-conjugated
Application:	Western Blotting (WB), Immunohistochemistry (Paraffin-embedded Sections) (IHC (p)), Enzyme Immunoassay (EIA)

## Product Details

Immunogen:	This antibody is generated from rabbits immunized with a KLH conjugated synthetic peptide selected from the C-terminal region of human ERK4.
Isotype:	Ig Fraction
Specificity:	This antibody reacts to ERK4.
Purification:	Protein G column, eluted with high and low pH buffers and neutralized immediately, followed by dialysis against PBS

## Target Details

Target:	MAPK4
Alternative Name:	MAPK4 / ERK4 ( <a href="#">MAPK4 Products</a> )

## Target Details

Background:	Protein kinases are enzymes that transfer a phosphate group from a phosphate donor, generally the $\gamma$ phosphate of ATP, onto an acceptor amino acid in a substrate protein. By this basic mechanism, protein kinases mediate most of the signal transduction in eukaryotic cells, regulating cellular metabolism, transcription, cell cycle progression, cytoskeletal rearrangement and cell movement, apoptosis, and differentiation. With more than 500 gene products, the protein kinase family is one of the largest families of proteins in eukaryotes. The family has been classified in 8 major groups based on sequence comparison of their tyrosine (PTK) or serine/threonine (STK) kinase catalytic domains. The CMGC group consists of 60 kinases including the cyclin-dependent kinase (CDK) and close relatives family, the MAP kinase (ERK) family, the glycogen synthase kinase 3 (GSK3) family, and the Cdc2-like kinase (CLK) family. Synonyms: Extracellular signal-regulated kinase 4, MAP kinase isoform p63, Mitogen-activated protein kinase 4, p63-MAPK
Gene ID:	5596, 9606
UniProt:	<a href="#">P31152</a>
Pathways:	<a href="#">MAPK Signaling</a>

## Application Details

Application Notes:	ELISA: 1/1,000. Western blotting: 1/100 - 1/500. Immunohistochemistry: 1/10 - 1/50. Flow cytometry. Other applications not tested. Optimal dilutions are dependent on conditions and should be determined by the user.
Restrictions:	For Research Use only

## Handling

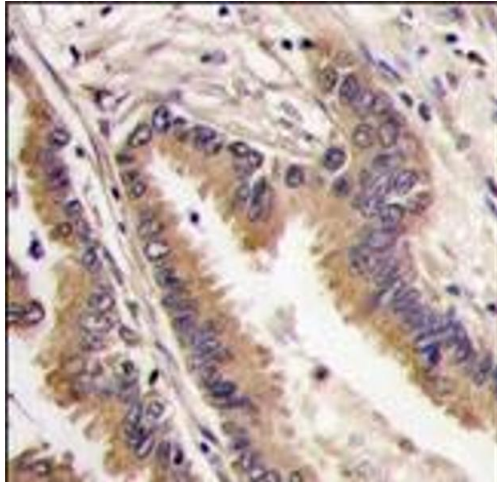
Format:	Liquid
Concentration:	0.25 mg/mL
Buffer:	PBS with 0.09 % (W/V) sodium azide
Preservative:	Sodium azide
Precaution of Use:	This product contains sodium azide: a POISONOUS AND HAZARDOUS SUBSTANCE which should be handled by trained staff only.
Handling Advice:	Avoid repeated freezing and thawing.

## Handling

Storage: 4 °C/-20 °C

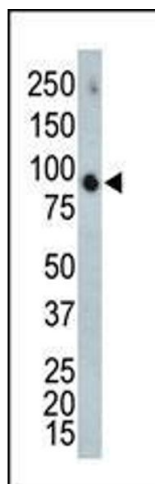
Storage Comment: Store the antibody undiluted at 2-8 °C for one month or (in aliquots) at -20 °C for longer.

## Images



### Immunohistochemistry (Paraffin-embedded Sections)

**Image 1.** Formalin-fixed and paraffin-embedded human lung carcinoma tissue reacted with ERK4 antibody (C-term), which was peroxidase-conjugated to the secondary antibody, followed by DAB staining.



### Western Blotting

**Image 2.** Western blot analysis of anti-ERK4 Pab in mouse brain tissue lysate. ERK4 (arrow) was detected using purified Pab. Secondary HRP-anti-rabbit was used for signal visualization with chemiluminescence.