

Datasheet for ABIN359709

**anti-MAPK15 antibody (N-Term)****2** Images[Go to Product page](#)

## Overview

Quantity:	0.4 mL
Target:	MAPK15
Binding Specificity:	N-Term
Reactivity:	Human
Host:	Rabbit
Clonality:	Polyclonal
Conjugate:	This MAPK15 antibody is un-conjugated
Application:	Western Blotting (WB), Immunohistochemistry (Paraffin-embedded Sections) (IHC (p)), Enzyme Immunoassay (EIA)

## Product Details

Immunogen:	This antibody is generated from rabbits immunized with a KLH conjugated synthetic peptide selected from the N-terminal region of human ERK8.
Isotype:	Ig Fraction
Specificity:	This antibody reacts to MAPK15 (ERK8).
Purification:	Protein A column, eluted with high and low pH buffers and neutralized immediately, followed by dialysis against PBS

## Target Details

Target:	MAPK15
Alternative Name:	MAPK15 ( <a href="#">MAPK15 Products</a> )

## Target Details

**Background:** The ERKs are a subfamily of the MAPKs that have been implicated in cell growth and differentiation. Extracellular signal-regulated kinase 8 (Erk8) is a large MAP kinase whose activity is controlled by serum and the c-Src non-receptor tyrosine kinase. ERK8 down-regulates transactivation of the glucocorticoid receptor through Hic-5 and can negatively regulate transcriptional co-activation of androgen receptor and GRalpha by Hic-5 in a kinase-independent manner, suggesting a broader role for ERK8 in the regulation of nuclear receptors beyond estrogen receptor alpha. Erk8 is a novel effector of RET/PTC3 and, therefore, RET biological functions. Synonyms: ERK8, Extracellular signal-regulated kinase 8, Mitogen-activated protein kinase 15

**Gene ID:** 225689, 9606

**UniProt:** [Q8TD08](#)

## Application Details

**Application Notes:** ELISA: 1/1,000. Western blotting: 1/50 - 1/100. Immunohistochemistry: 1/10 - 1/50.  
Other applications not tested.  
Optimal dilutions are dependent on conditions and should be determined by the user.

**Restrictions:** For Research Use only

## Handling

**Format:** Liquid

**Concentration:** 0.25 mg/mL

**Buffer:** PBS with 0.09 % (W/V) sodium azide

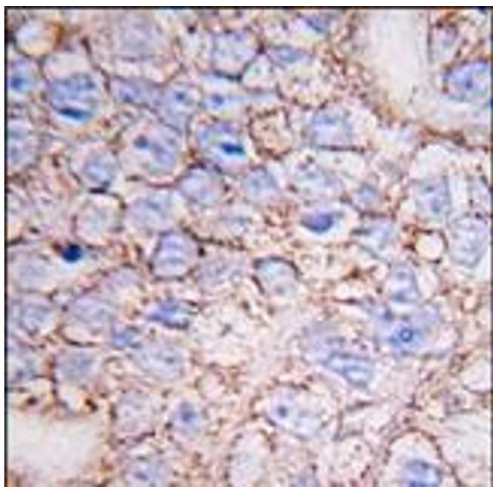
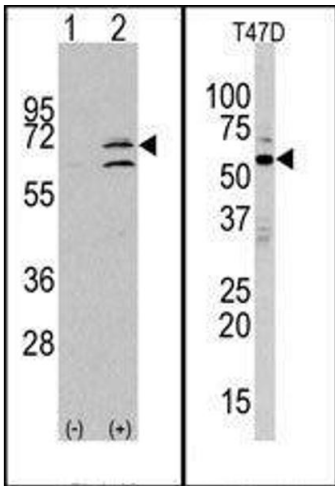
**Preservative:** Sodium azide

**Precaution of Use:** This product contains sodium azide: a POISONOUS AND HAZARDOUS SUBSTANCE which should be handled by trained staff only.

**Handling Advice:** Avoid repeated freezing and thawing.

**Storage:** 4 °C/-20 °C

**Storage Comment:** Store the antibody undiluted at 2-8 °C for one month or (in aliquots) at -20 °C for longer.



Western Blotting

**Image 1.** (LEFT) Western blot analysis of ERK8 (arrow) using rabbit polyclonal ERK8 Antibody (N-term). 293 cell lysates (2 ug/lane) either nontransfected (Lane 1) or transiently transfected with the MAPK15 gene (Lane 2) (Origene Technologies). (RIGHT) Western blot analysis of anti-ERK8 Antibody (N-term) in T47D cell line lysates (35ug/lane). ERK8 (arrow) was detected using the purified Pab (1:60 dilution).

Immunohistochemistry (Paraffin-embedded Sections)

**Image 2.** Formalin-fixed and paraffin-embedded human breast carcinoma tissue reacted with ERK8 antibody (N-term), which was peroxidase-conjugated to the secondary antibody, followed by DAB staining.