

Datasheet for ABIN359726

anti-CLIC4 antibody**2** Images[Go to Product page](#)

Overview

Quantity:	0.4 mL
Target:	CLIC4
Reactivity:	Human
Host:	Rabbit
Clonality:	Polyclonal
Conjugate:	This CLIC4 antibody is un-conjugated
Application:	Western Blotting (WB), Immunohistochemistry (Paraffin-embedded Sections) (IHC (p)), Enzyme Immunoassay (EIA)

Product Details

Immunogen:	This antibody is generated from rabbits immunized with recombinant human CLIC4 protein.
Isotype:	Ig Fraction
Specificity:	This antibody reacts to CLIC4.
Purification:	Prepared by Saturated Ammonium Sulfate (SAS) precipitation followed by dialysis against PBS

Target Details

Target:	CLIC4
Alternative Name:	CLIC4 (CLIC4 Products)
Background:	Chloride channels are a diverse group of proteins that regulate fundamental cellular processes including stabilization of cell membrane potential, transepithelial transport, maintenance of intracellular pH , and regulation of cell volume. Chloride intracellular channel 4 (CLIC4) protein,

Target Details

encoded by the CLIC4 gene, is a member of the p64 family, the gene is expressed in many tissues and exhibits a intracellular vesicular pattern in Panc-1 cells (pancreatic cancer cells).Synonyms: Chloride Intracellular Channel Protein 4, Intracellular Chloride Ion Channel Protein p64H1, mc3s5, mtCLIC, p64H1

Gene ID: 25932, 9606

UniProt: [Q9Y696](#)

Application Details

Application Notes: ELISA: 1/1,000. Western blotting: 1/50 - 1/100. Immunohistochemistry: 1/10 - 1/50.
Other applications not tested.
Optimal dilutions are dependent on conditions and should be determined by the user.

Restrictions: For Research Use only

Handling

Format: Liquid

Concentration: 0.25 mg/mL

Buffer: PBS with 0.09 % (W/V) sodium azide

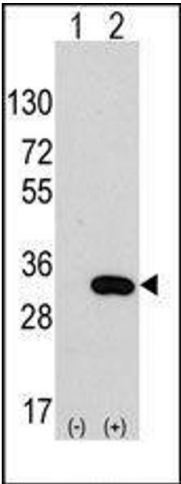
Preservative: Sodium azide

Precaution of Use: This product contains sodium azide: a POISONOUS AND HAZARDOUS SUBSTANCE which should be handled by trained staff only.

Handling Advice: Avoid repeated freezing and thawing.

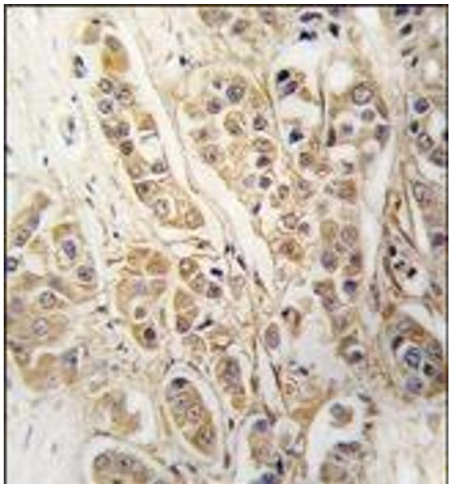
Storage: 4 °C/-20 °C

Storage Comment: Store the antibody undiluted at 2-8 °C for one month or (in aliquots) at -20 °C for longer.



Western Blotting

Image 1. Western blot analysis of CLIC4 (arrow) using rabbit polyclonal CLIC4 Antibody.293 cell lysates (2 ug/lane) either nontransfected (Lane 1) or transiently transfected with the CLIC4 gene (Lane 2)



Immunohistochemistry (Paraffin-embedded Sections)

Image 2. Formalin-fixed and paraffin-embedded human breast carcinoma tissue reacted with CLIC4 antibody, which was peroxidase-conjugated to the secondary antibody, followed by DAB staining.