

Datasheet for ABIN359727  
**anti-EPRS antibody (N-Term)**

## 2 Images

[Go to Product page](#)

## Overview

|                      |  |
|----------------------|--|
| Quantity:            | 0.4 mL   |
| Target:              | EPRS   |
| Binding Specificity: | N-Term   |
| Reactivity:          | Human  |
| Host:                | Rabbit   |
| Clonality:           | Polyclonal   |
| Conjugate:           | This EPRS antibody is un-conjugated  |
| Application:         | Western Blotting (WB), Immunohistochemistry (Paraffin-embedded Sections) (IHC (p)), Enzyme Immunoassay (EIA) |

## Product Details

|               |  |
|---------------|--|
| Immunogen:    | This antibody is generated from rabbits immunized with a KLH conjugated synthetic peptide selected from the N-terminal region of human EPRS. |
| Isotype:      | Ig Fraction  |
| Specificity:  | This antibody reacts to EPRS.  |
| Purification: | Prepared by Saturated Ammonium Sulfate (SAS) precipitation followed by dialysis against PBS  |

## Target Details

|                   |  |
|-------------------|--|
| Target:           | EPRS                                   |
| Alternative Name: | EPRS ( <a href="#">EPRS Products</a> ) |

## Target Details

**Background:** Aminoacyl-tRNA synthetases are a class of enzymes that charge tRNAs with their cognate amino acids. EPRS is a multifunctional aminoacyl-tRNA synthetase that catalyzes the aminoacylation of glutamic acid and proline tRNA species. Synonyms: Bifunctional aminoacyl-tRNA synthetase, Cell proliferation-inducing gene 32 protein, GLNS, PARS, PIG32, QARS, QPRS

**Gene ID:** 2058, 9606

**UniProt:** [P07814](#)

## Application Details

**Application Notes:** ELISA: 1/1,000. Western blotting: 1/50 - 1/100. Immunohistochemistry: 1/10 - 1/50.  
Other applications not tested.  
Optimal dilutions are dependent on conditions and should be determined by the user.

**Restrictions:** For Research Use only

## Handling

**Format:** Liquid

**Concentration:** 0.25 mg/mL

**Buffer:** PBS with 0.09 % (W/V) sodium azide

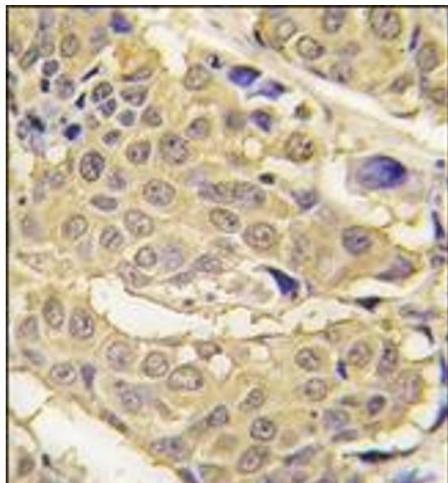
**Preservative:** Sodium azide

**Precaution of Use:** This product contains sodium azide: a POISONOUS AND HAZARDOUS SUBSTANCE which should be handled by trained staff only.

**Handling Advice:** Avoid repeated freezing and thawing.

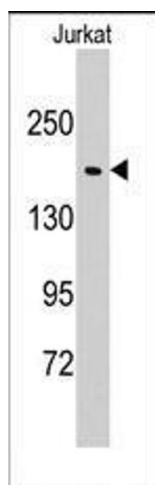
**Storage:** 4 °C/-20 °C

**Storage Comment:** Store the antibody undiluted at 2-8 °C for one month or (in aliquots) at -20 °C for longer.



#### Immunohistochemistry (Paraffin-embedded Sections)

**Image 1.** Formalin-fixed and paraffin-embedded human breast carcinoma tissue reacted with EPRS antibody (N-term), which was peroxidase-conjugated to the secondary antibody, followed by DAB staining.



#### Western Blotting

**Image 2.** Western blot analysis of anti-EPRS Pab in Jurkat cell line lysates (35ug/lane). EPRS (arrow) was detected using the purified Pab (1:60 dilution).