

Datasheet for ABIN359754

**anti-CLIC5 antibody****2** Images[Go to Product page](#)

## Overview

Quantity:	0.4 mL
Target:	CLIC5
Reactivity:	Human
Host:	Rabbit
Clonality:	Polyclonal
Conjugate:	This CLIC5 antibody is un-conjugated
Application:	Western Blotting (WB), Immunohistochemistry (Paraffin-embedded Sections) (IHC (p)), Enzyme Immunoassay (EIA)

## Product Details

Immunogen:	This antibody is generated from rabbits immunized with human recombinant CLIC5 protein.
Isotype:	Ig Fraction
Specificity:	This antibody reacts to CLIC5.
Purification:	Prepared by Saturated Ammonium Sulfate (SAS) precipitation followed by dialysis against PBS

## Target Details

Target:	CLIC5
Alternative Name:	CLIC5 ( <a href="#">CLIC5 Products</a> )
Background:	Chloride intracellular channels are involved in chloride ion transport within various subcellular compartments. CLIC5 specifically associates with the cytoskeleton of placenta microvilli. Synonyms: Chloride intracellular channel protein 5

## Target Details

Gene ID:	100131610, 9606
UniProt:	<a href="#">Q9NZA1</a>
Pathways:	<a href="#">Sensory Perception of Sound</a>

## Application Details

Application Notes:	ELISA: 1/1,000. Western blotting: 1/50 - 1/100. Immunohistochemistry: 1/10 - 1/50. Other applications not tested. Optimal dilutions are dependent on conditions and should be determined by the user.
Restrictions:	For Research Use only

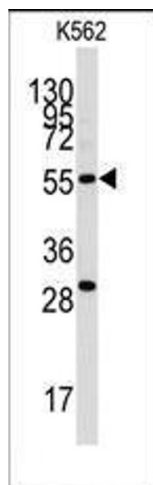
## Handling

Format:	Liquid
Concentration:	0.25 mg/mL
Buffer:	PBS with 0.09 % (W/V) sodium azide
Preservative:	Sodium azide
Precaution of Use:	This product contains sodium azide: a POISONOUS AND HAZARDOUS SUBSTANCE which should be handled by trained staff only.
Handling Advice:	Avoid repeated freezing and thawing.
Storage:	4 °C/-20 °C
Storage Comment:	Store the antibody undiluted at 2-8 °C for one month or (in aliquots) at -20 °C for longer.



#### Immunohistochemistry (Paraffin-embedded Sections)

**Image 1.** Formalin-fixed and paraffin-embedded human colon carcinoma tissue reacted with CLIC5 antibody, which was peroxidase-conjugated to the secondary antibody, followed by DAB staining.



#### Western Blotting

**Image 2.** Western blot analysis of anti-CLIC5 Antibody in K562 cell line lysates (35ug/lane). CLIC5 (arrow) was detected using the purified Pab (1:60 dilution).