

Datasheet for ABIN359808

anti-EPH Receptor A10 antibody (N-Term)**2** Images[Go to Product page](#)

Overview

Quantity:	0.4 mL
Target:	EPH Receptor A10 (EPHA10)
Binding Specificity:	N-Term
Reactivity:	Human
Host:	Rabbit
Clonality:	Polyclonal
Conjugate:	This EPH Receptor A10 antibody is un-conjugated
Application:	Western Blotting (WB), Immunohistochemistry (Paraffin-embedded Sections) (IHC (p)), Enzyme Immunoassay (EIA)

Product Details

Immunogen:	This antibody is generated from rabbits immunized with a KLH conjugated synthetic peptide selected from the N-terminal region of human EPHA10.
Isotype:	Ig Fraction
Specificity:	This antibody reacts to EPHA10.
Purification:	Protein A column, eluted with high and low pH buffers and neutralized immediately, followed by dialysis against PBS

Target Details

Target:	EPH Receptor A10 (EPHA10)
Alternative Name:	EPHA10 (EPHA10 Products)

Target Details

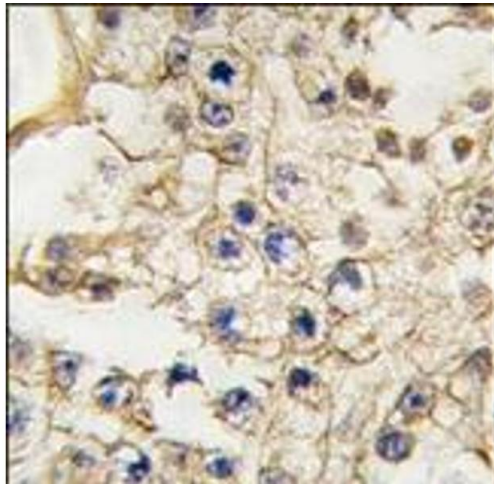
Background:	EPHA10 is a receptor for members of the ephrin-A family. It binds to EFNA3, EFNA4 and EFNA5.Synonyms: Ephrin type-A receptor 10
Gene ID:	284656, 9606
UniProt:	Q5JZY3
Pathways:	RTK Signaling

Application Details

Application Notes:	ELISA: 1/1,000. Western blotting: 1/50 - 1/100. Immunohistochemistry: 1/10 - 1/50. Other applications not tested. Optimal dilutions are dependent on conditions and should be determined by the user.
Restrictions:	For Research Use only

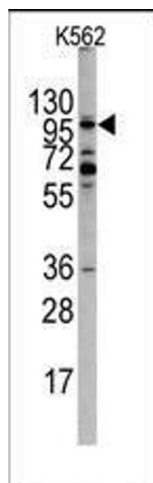
Handling

Format:	Liquid
Concentration:	0.25 mg/mL
Buffer:	PBS with 0.09 % (W/V) sodium azide
Preservative:	Sodium azide
Precaution of Use:	This product contains sodium azide: a POISONOUS AND HAZARDOUS SUBSTANCE which should be handled by trained staff only.
Handling Advice:	Avoid repeated freezing and thawing.
Storage:	4 °C/-20 °C
Storage Comment:	Store the antibody undiluted at 2-8 °C for one month or (in aliquots) at-20 °C for longer.



Immunohistochemistry (Paraffin-embedded Sections)

Image 1. Formalin-fixed and paraffin-embedded human testis tissue reacted with EPHA10 antibody (N-term), which was peroxidase-conjugated to the secondary antibody, followed by DAB staining.



Western Blotting

Image 2. Western blot analysis of EPHA10 Antibody (N-term) in K562 cell line lysates (35ug/lane). EPHA10 (arrow) was detected using the purified Pab (1:60 dilution).