



[Go to Product page](#)

Datasheet for ABIN359960  
**anti-DOK2 antibody (C-Term)**

2 Images

Overview

Quantity:	0.4 mL
Target:	DOK2
Binding Specificity:	C-Term
Reactivity:	Human
Host:	Rabbit
Clonality:	Polyclonal
Conjugate:	This DOK2 antibody is un-conjugated
Application:	Western Blotting (WB), Immunohistochemistry (Paraffin-embedded Sections) (IHC (p)), Enzyme Immunoassay (EIA)

Product Details

Immunogen:	This antibody is generated from rabbits immunized with a KLH conjugated synthetic peptide selected from the C-terminal region of human DOK2.
Isotype:	Ig Fraction
Specificity:	This antibody reacts to DOK2.
Purification:	Protein G column, eluted with high and low pH buffers and neutralized immediately, followed by dialysis against PBS

Target Details

Target:	DOK2
Alternative Name:	DOK2 / p56 Dok2 ( <a href="#">DOK2 Products</a> )

## Target Details

---

**Background:** Docking proteins interact with receptor tyrosine kinases and mediate particular biological responses using signal transduction. Dok-2 acts as a multiple docking protein downstream of receptor or non-receptor tyrosine kinases. By this mechanism it acts to negatively regulate signal transduction and cell proliferation controlled by cytokines in a feedback loop. Dok-2 is highly expressed in cells and tissues of hematopoietic origin as well as in lung. Expression of bcr/abl induces additional tyrosine phosphorylation of the Dok1 and Dok2 proteins and their association with Ras-GAP. Thus, it is suspected that DOK association regulates GAP activity toward Ras and that the Dok proteins serve as mediators of bcr-abl signaling. The role of Dok proteins in bcr-abl regulation may also be implicated in chronic myelogenous leukemia (CML), which is characterized by a Philadelphia chromosome translocation t(9,22). Such a mutation would result in a p210-bcr/abl chimeric protein-tyrosine kinase which has been found in many CML cases. Synonyms: Docking protein 2, Downstream of tyrosine kinase 2, p56(dok-2), p56Dok-2

---

**Gene ID:** 9046, 9606

---

**UniProt:** [O60496](#)

---

## Application Details

---

**Application Notes:** ELISA: 1/1,000. Western blotting: 1/100 - 1/500. Immunohistochemistry: 1/50 - 1/100. Other applications not tested. Optimal dilutions are dependent on conditions and should be determined by the user.

---

**Restrictions:** For Research Use only

---

## Handling

---

**Format:** Liquid

---

**Concentration:** 0.25 mg/mL

---

**Buffer:** PBS with 0.09 % (W/V) sodium azide

---

**Preservative:** Sodium azide

---

**Precaution of Use:** This product contains sodium azide: a POISONOUS AND HAZARDOUS SUBSTANCE which should be handled by trained staff only.

---

**Handling Advice:** Avoid repeated freezing and thawing.

---

**Storage:** 4 °C/-20 °C

---

## Handling

Storage Comment: Store the antibody undiluted at 2-8 °C for one month or (in aliquots) at-20 °C for longer.

## Images

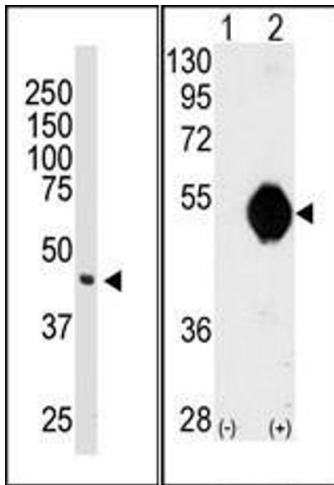


Image 1.

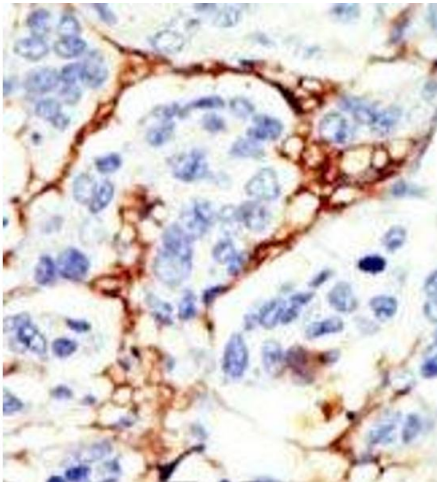


Image 2.