



Datasheet for ABIN360006
anti-STK38L antibody (C-Term)



[Go to Product page](#)

2 Images

Overview

Quantity:	0.4 mL
Target:	STK38L
Binding Specificity:	C-Term
Reactivity:	Human
Host:	Rabbit
Clonality:	Polyclonal
Conjugate:	This STK38L antibody is un-conjugated
Application:	Western Blotting (WB), Enzyme Immunoassay (EIA)

Product Details

Immunogen:	This antibody is generated from rabbits immunized with a KLH conjugated synthetic peptide selected from the C-terminal region of human STK38L.
Isotype:	Ig Fraction
Specificity:	This antibody reacts to STK38L.
Purification:	Protein G column, eluted with high and low pH buffers and neutralized immediately, followed by dialysis against PBS

Target Details

Target:	STK38L
Alternative Name:	STK38L (STK38L Products)

Target Details

Background: STK38L contains 12 protein kinase catalytic subdomains and a potential bipartite nuclear localization signal. Northern blot analysis revealed expression of a 3.9-kb transcript in all tissues tested, with the possible exception of adult brain. Highest expression was in peripheral blood leukocytes. Immunoblot and immunofluorescence microscopy demonstrated predominantly nuclear expression of a 55-kD protein. Synonyms: KIAA0965, NDR2, Nuclear Dbf2-related kinase 2, Serine/threonine-protein kinase 38-like

Gene ID: 23012, 9606

UniProt: [Q9Y2H1](#)

Application Details

Application Notes: ELISA: 1/1,000. Western Blot: 1/250 - 1/500.
Other applications not tested.
Optimal dilutions are dependent on conditions and should be determined by the user.

Restrictions: For Research Use only

Handling

Format: Liquid

Concentration: 0.25 mg/mL

Buffer: PBS with 0.09 % (W/V) sodium azide

Preservative: Sodium azide

Precaution of Use: This product contains sodium azide: a POISONOUS AND HAZARDOUS SUBSTANCE which should be handled by trained staff only.

Handling Advice: Avoid repeated freezing and thawing.

Storage: 4 °C/-20 °C

Storage Comment: Store the antibody undiluted at 2-8 °C for one month or (in aliquots) at -20 °C for longer.

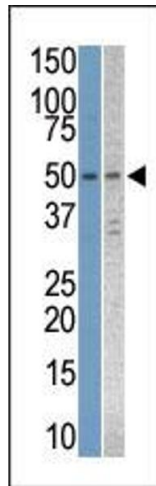


Image 1.

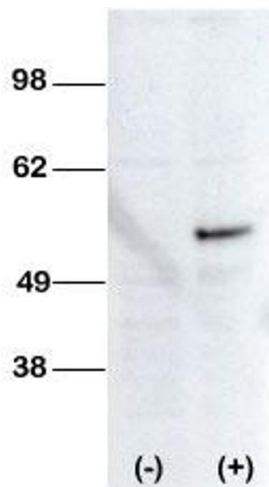


Image 2.