



Datasheet for ABIN360015  
**anti-PUM1 antibody (N-Term)**



[Go to Product page](#)

2 Images

### Overview

Quantity:	0.4 mL
Target:	PUM1
Binding Specificity:	N-Term
Reactivity:	Human
Host:	Rabbit
Clonality:	Polyclonal
Conjugate:	This PUM1 antibody is un-conjugated
Application:	Immunohistochemistry (Paraffin-embedded Sections) (IHC (p)), Enzyme Immunoassay (EIA)

### Product Details

Immunogen:	This antibody is generated from Rabbits immunized with a KLH conjugated synthetic peptide selected from the N-terminal region of Human PUM1.
Isotype:	Ig Fraction
Specificity:	This antibody recognizes Pumilio 1 (PUM1).
Cross-Reactivity (Details):	Species reactivity (expected):Mouse. Species reactivity (tested):Human.
Purification:	Protein A Chromatography followed by peptide affinity purification.

### Target Details

Target:	PUM1
---------	------

## Target Details

---

Alternative Name:	Pumilio 1 / PUM1 ( <a href="#">PUM1 Products</a> )
Background:	PUM1 is a sequence-specific RNA-binding protein that regulates translation and mRNA stability by binding the 3'-UTR of mRNA targets. Its interactions and tissue specificity suggest that it may be required to support proliferation and self-renewal of stem cells by regulating the translation of key transcripts. Synonyms: HsPUM, KIAA0099, PUMH1, Pumilio homolog 1, Pumilio-1
Molecular Weight:	126473 Da
Gene ID:	9698
NCBI Accession:	<a href="#">NP_055491</a>
UniProt:	<a href="#">Q14671</a>

## Application Details

---

Application Notes:	ELISA: 1/1,000. Western blot 1/50 approx. 1/100. Immunohistochemistry: 1/10 approx. 1/50. Other applications not tested. Optimal dilutions are dependent on conditions and should be determined by the user.
--------------------	--

Restrictions:	For Research Use only
---------------	-----------------------

## Handling

---

Format:	Liquid
Concentration:	0.25 mg/mL
Buffer:	PBS with 0.09 % (W/V) Sodium Azide as preservative.
Preservative:	Sodium azide
Precaution of Use:	This product contains sodium azide: a POISONOUS AND HAZARDOUS SUBSTANCE which should be handled by trained staff only.
Handling Advice:	Avoid repeated freezing and thawing.
Storage:	4 °C/-20 °C
Storage Comment:	Store the antibody undiluted at 2-8 °C for one month or (in aliquots) at -20 °C for longer.

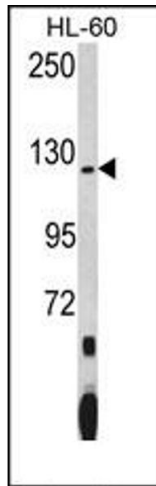


Image 1.

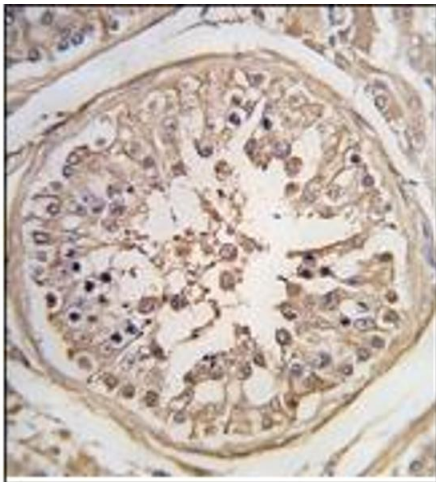


Image 2.