



[Go to Product page](#)

Datasheet for ABIN360040  
**anti-ANTXR1 antibody (Tyr382)**

2 Images

Overview

Quantity:	0.4 mL
Target:	ANTXR1
Binding Specificity:	AA 365-394, Tyr382
Reactivity:	Human
Host:	Rabbit
Clonality:	Polyclonal
Conjugate:	This ANTXR1 antibody is un-conjugated
Application:	Western Blotting (WB), Immunohistochemistry (Paraffin-embedded Sections) (IHC (p)), Enzyme Immunoassay (EIA)

Product Details

Immunogen:	KLH conjugated synthetic peptide between 365~394 amino acids surrounding Tyr382 of Human ANTXR1.
Isotype:	Ig Fraction
Specificity:	This antibody recognizes ANTXR1.
Purification:	Affinity Chromatography on Protein A

Target Details

Target:	ANTXR1
Alternative Name:	Anthrax Toxin Receptor 1 ( <a href="#">ANTXR1 Products</a> )

## Target Details

---

**Background:** ANTXR1 is a type I transmembrane protein and is a tumor-specific endothelial marker that has been implicated in colorectal cancer. This protein has been shown to also be a docking protein or receptor for Bacillus anthracis toxin, the causative agent of the disease, anthrax. The binding of the protective antigen (PA) component, of the tripartite anthrax toxin, to this receptor protein mediates delivery of toxin components to the cytosol of cells. Once inside the cell, the other two components of anthrax toxin, edema factor (EF) and lethal factor (LF) disrupt normal cellular processes. Synonyms: ANTXR1, ATR, TEM8, Tumor endothelial marker 8

**Gene ID:** 84168, 9606

**UniProt:** [Q9H6X2](#)

## Application Details

---

**Application Notes:** ELISA: 1/1,000. Western blotting: 1/50-1/100. Immunohistochemistry: 1/10-1/50.  
Other applications not tested.  
Optimal dilutions are dependent on conditions and should be determined by the user.

**Restrictions:** For Research Use only

## Handling

---

**Format:** Liquid

**Concentration:** 0.25 mg/mL

**Buffer:** PBS with 0.09 % (W/V) Sodium Azide

**Preservative:** Sodium azide

**Precaution of Use:** This product contains sodium azide: a POISONOUS AND HAZARDOUS SUBSTANCE which should be handled by trained staff only.

**Handling Advice:** Avoid repeated freezing and thawing.

**Storage:** 4 °C/-20 °C

**Storage Comment:** Store the antibody undiluted at 2-8 °C for one month or (in aliquots) at -20 °C for longer.

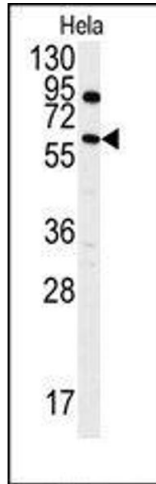


Image 1.

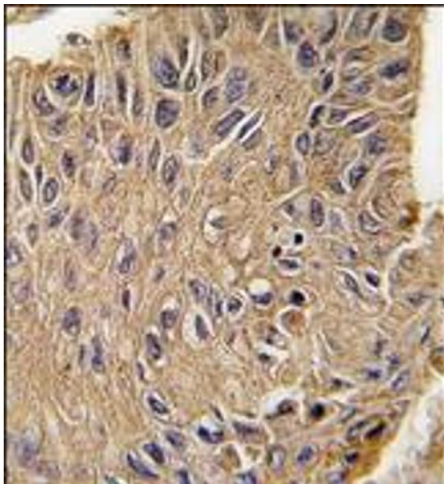


Image 2.