

Datasheet for ABIN360096

anti-PRKCDBP antibody (Middle Region)[Go to Product page](#)**1** Image

Overview

Quantity:	0.4 mL
Target:	PRKCDBP
Binding Specificity:	Middle Region
Reactivity:	Human
Host:	Rabbit
Clonality:	Polyclonal
Conjugate:	This PRKCDBP antibody is un-conjugated
Application:	Western Blotting (WB), Enzyme Immunoassay (EIA)

Product Details

Immunogen:	This antibody is generated from rabbits immunized with a KLH conjugated synthetic peptide selected from the center region of human PRKCDBP.
Isotype:	Ig Fraction
Specificity:	This antibody reacts to PRKCDBP.
Purification:	Prepared by Saturated Ammonium Sulfate (SAS) precipitation followed by dialysis against PBS

Target Details

Target:	PRKCDBP
Alternative Name:	PRKCDBP (PRKCDBP Products)
Background:	PRKCDBP was identified as a binding protein of the protein kinase C, delta (PRKCD). The

Target Details

expression of this protein in cultured cell lines is strongly induced by serum starvation, and was found to be down-regulated in various cancer cell lines, suggesting the possible tumor suppressor function of this protein. Synonyms: Cavin-3, Protein kinase C delta-binding protein, SRBC, Serum deprivation response factor-related gene product that binds to C-kinase, hSRBC

Gene ID: 112464, 9606

UniProt: [Q969G5](#)

Application Details

Application Notes: ELISA: 1/1,000. Western blotting: 1/50 - 1/100.
Other applications not tested.
Optimal dilutions are dependent on conditions and should be determined by the user.

Restrictions: For Research Use only

Handling

Format: Liquid

Concentration: 0.25 mg/mL

Buffer: PBS with 0.09 % (W/V) sodium azide

Preservative: Sodium azide

Precaution of Use: This product contains sodium azide: a POISONOUS AND HAZARDOUS SUBSTANCE which should be handled by trained staff only.

Handling Advice: Avoid repeated freezing and thawing.

Storage: 4 °C/-20 °C

Storage Comment: Store the antibody undiluted at 2-8 °C for one month or (in aliquots) at -20 °C for longer.

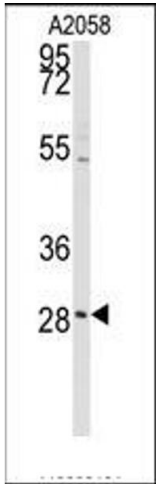


Image 1.