

Datasheet for ABIN360099

anti-alpha Actinin 4 antibody (N-Term)



[Go to Product page](#)

2 Images

Overview

Quantity:	0.4 mL
Target:	alpha Actinin 4 (ACTN4)
Binding Specificity:	N-Term
Reactivity:	Human
Host:	Rabbit
Clonality:	Polyclonal
Conjugate:	This alpha Actinin 4 antibody is un-conjugated
Application:	Western Blotting (WB), Immunohistochemistry (Paraffin-embedded Sections) (IHC (p)), Enzyme Immunoassay (EIA)

Product Details

Immunogen:	This antibody is generated from rabbits immunized with a KLH conjugated synthetic peptide selected from the N-terminal region of human ACTN4.
Isotype:	Ig Fraction
Specificity:	This antibody reacts to ACTN4.
Purification:	Prepared by Saturated Ammonium Sulfate (SAS) precipitation followed by dialysis against PBS

Target Details

Target:	alpha Actinin 4 (ACTN4)
Alternative Name:	alpha-Actinin-4 / ACTN4 (ACTN4 Products)

Target Details

Background:	Alpha actinins belong to the spectrin gene superfamily which represents a diverse group of cytoskeletal proteins, including the alpha and beta spectrins and dystrophins. Alpha actinin is an actin-binding protein with multiple roles in different cell types. In nonmuscle cells, the cytoskeletal isoform is found along microfilament bundles and adherens-type junctions, where it is involved in binding actin to the membrane. In contrast, skeletal, cardiac, and smooth muscle isoforms are localized to the Z-disc and analogous dense bodies, where they help anchor the myofibrillar actin filaments. This protein is a nonmuscle, alpha actinin isoform which is concentrated in the cytoplasm, and is thought to be involved in metastatic processes. Mutations in the gene encoding this protein have been associated with focal and segmental glomerulosclerosis.Synonyms: F-actin cross-linking protein, Non-muscle alpha actinin 4
Gene ID:	81, 9606
UniProt:	O43707
Pathways:	Proton Transport

Application Details

Application Notes:	ELISA: 1/1,000. Western blotting: 1/50 - 1/100. Immunohistochemistry: 1/10 - 1/50. Other applications not tested. Optimal dilutions are dependent on conditions and should be determined by the user.
Restrictions:	For Research Use only

Handling

Format:	Liquid
Concentration:	0.25 mg/mL
Buffer:	PBS with 0.09 % (W/V) sodium azide
Preservative:	Sodium azide
Precaution of Use:	This product contains sodium azide: a POISONOUS AND HAZARDOUS SUBSTANCE which should be handled by trained staff only.
Handling Advice:	Avoid repeated freezing and thawing.
Storage:	4 °C/-20 °C
Storage Comment:	Store the antibody undiluted at 2-8 °C for one month or (in aliquots) at -20 °C for longer.

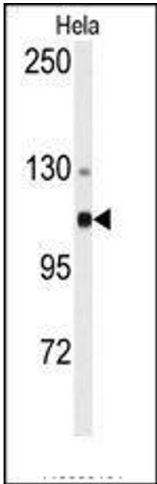


Image 1.

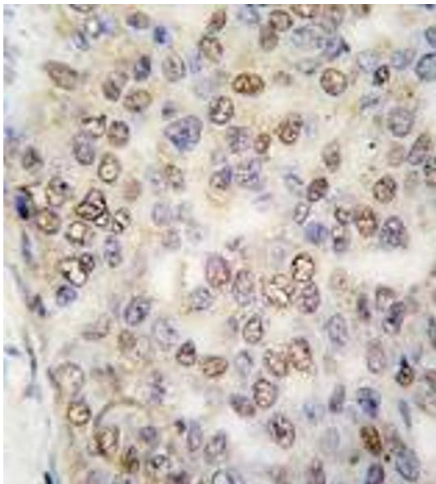


Image 2.