

Datasheet for ABIN360110
anti-PHLPP2 antibody (N-Term)[Go to Product page](#)

1 Image

Overview

Quantity:	0.4 mL
Target:	PHLPP2
Binding Specificity:	N-Term
Reactivity:	Human
Host:	Rabbit
Clonality:	Polyclonal
Conjugate:	This PHLPP2 antibody is un-conjugated
Application:	Immunohistochemistry (Paraffin-embedded Sections) (IHC (p)), Enzyme Immunoassay (EIA)

Product Details

Immunogen:	This antibody is generated from rabbits immunized with a KLH conjugated synthetic peptide selected from the N-term region of human PHLPP2.
Isotype:	Ig Fraction
Specificity:	This antibody reacts to PHLPP2.
Purification:	Prepared by Saturated Ammonium Sulfate (SAS) precipitation followed by dialysis against PBS

Target Details

Target:	PHLPP2
Alternative Name:	PHLPP2 (PHLPP2 Products)
Background:	PHLPP2 is a protein phosphatase that specifically mediates dephosphorylation of 'Ser-473' of

Target Details

AKT1. This protein regulates the balance between cell survival and apoptosis through a cascade that primarily alters the function of transcription factors that regulate pro- and antiapoptotic genes. Dephosphorylation of 'Ser-473' of AKT1 triggers apoptosis and decrease cell proliferation. It also controls the phosphorylation of AKT3. Synonyms: KIAA0931, PH domain leucine-rich repeat-containing protein phosphatase 2, PH domain leucine-rich repeat-containing protein phosphatase-like, PHLPP-like, PHLPP

Gene ID: 23035, 9606

UniProt: [Q6ZVD8](#)

Pathways: [PI3K-Akt Signaling](#), [Fc-epsilon Receptor Signaling Pathway](#)

Application Details

Application Notes: ELISA: 1/1,000. Immunohistochemistry: 1/10 - 1/50.
Other applications not tested.
Optimal dilutions are dependent on conditions and should be determined by the user.

Restrictions: For Research Use only

Handling

Format: Liquid

Concentration: 0.25 mg/mL

Buffer: PBS with 0.09 % (W/V) sodium azide

Preservative: Sodium azide

Precaution of Use: This product contains sodium azide: a POISONOUS AND HAZARDOUS SUBSTANCE which should be handled by trained staff only.

Handling Advice: Avoid repeated freezing and thawing.

Storage: 4 °C/-20 °C

Storage Comment: Store the antibody undiluted at 2-8 °C for one month or (in aliquots) at -20 °C for longer.

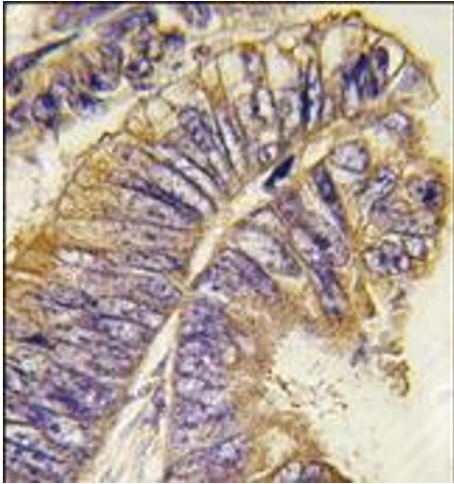


Image 1.