

Datasheet for ABIN360194
anti-PHLPP1 antibody (N-Term)[Go to Product page](#)

1 Image

Overview

Quantity:	0.4 mL
Target:	PHLPP1
Binding Specificity:	N-Term
Reactivity:	Human
Host:	Rabbit
Clonality:	Polyclonal
Conjugate:	This PHLPP1 antibody is un-conjugated
Application:	Western Blotting (WB), Enzyme Immunoassay (EIA)

Product Details

Immunogen:	This antibody is generated from rabbits immunized with a KLH conjugated synthetic peptide selected from the N-terminal region of human PHLPP1.
Isotype:	Ig Fraction
Specificity:	This antibody reacts to PHLPP1.
Purification:	Prepared by Saturated Ammonium Sulfate (SAS) precipitation followed by dialysis against PBS

Target Details

Target:	PHLPP1
Alternative Name:	PHLPP1 (PHLPP1 Products)
Background:	PHLPP1 is a protein phosphatase that specifically mediates dephosphorylation of 'Ser-473' of

Target Details

AKT1, a protein that regulates the balance between cell survival and apoptosis through a cascade that primarily alters the function of transcription factors that regulate pro- and antiapoptotic genes. Synonyms: KIAA0606, PH domain leucine-rich repeat-containing protein phosphatase 1, PHLPP, PLEKHE1, Pleckstrin homology domain-containing family E member 1, SCOP, Suprachiasmatic nucleus circadian oscillatory protein

Gene ID: 23239, 9606

UniProt: [O60346](#)

Pathways: [PI3K-Akt Signaling](#), [Fc-epsilon Receptor Signaling Pathway](#), [Neurotrophin Signaling Pathway](#)

Application Details

Application Notes: ELISA: 1/1,000. Western blotting: 1/50 - 1/100.
Other applications not tested.
Optimal dilutions are dependent on conditions and should be determined by the user.

Restrictions: For Research Use only

Handling

Format: Liquid

Concentration: 0.25 mg/mL

Buffer: PBS with 0.09 % (W/V) sodium azide

Preservative: Sodium azide

Precaution of Use: This product contains sodium azide: a POISONOUS AND HAZARDOUS SUBSTANCE which should be handled by trained staff only.

Handling Advice: Avoid repeated freezing and thawing.

Storage: 4 °C/-20 °C

Storage Comment: Store the antibody undiluted at 2-8 °C for one month or (in aliquots) at -20 °C for longer.

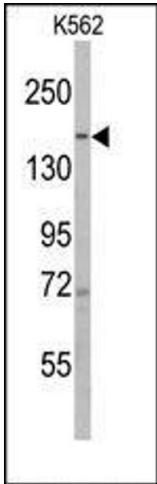


Image 1.