

Datasheet for ABIN360266

anti-ALOX15 antibody (C-Term)



[Go to Product page](#)

2 Images

Overview

Quantity:	200 µL
Target:	ALOX15
Binding Specificity:	C-Term
Reactivity:	Human
Host:	Rabbit
Clonality:	Polyclonal
Conjugate:	This ALOX15 antibody is un-conjugated
Application:	Western Blotting (WB), Immunohistochemistry (Paraffin-embedded Sections) (IHC (p)), Enzyme Immunoassay (EIA)

Product Details

Immunogen:	This antibody is generated from rabbits immunized with a KLH conjugated synthetic peptide selected from the C-terminal region of human ALOX15.
Isotype:	Ig Fraction
Specificity:	This antibody recognizes Human ALOX15 (C-term).
Purification:	Prepared by Saturated Ammonium Sulfate (SAS) precipitation followed by dialysis against PBS

Target Details

Target:	ALOX15
Abstract:	ALOX15 Products

Target Details

Background:	ALOX15 converts arachidonic acid to 15S-hydroperoxyeicosatetraenoic acid. The protein also acts on C-12 of arachidonate as well as on linoleic acid.Synonyms: 15-LOX, Arachidonate 15-lipoxygenase
Molecular Weight:	74804 Da
Gene ID:	246, 9606
UniProt:	P16050
Pathways:	Regulation of Actin Filament Polymerization

Application Details

Application Notes:	ELISA: 1/1,000. Western blotting: 1/50 - 1/100. Immunohistochemistry: 1/50 - 1/100. Other applications not tested. Optimal dilutions are dependent on conditions and should be determined by the user.
Restrictions:	For Research Use only

Handling

Format:	Liquid
Concentration:	0.25 mg/mL
Buffer:	PBS with 0.09 % (W/V) Sodium Azide as preservative
Preservative:	Sodium azide
Precaution of Use:	This product contains sodium azide: a POISONOUS AND HAZARDOUS SUBSTANCE which should be handled by trained staff only.
Handling Advice:	Avoid repeated freezing and thawing.
Storage:	4 °C/-20 °C
Storage Comment:	Store the antibody undiluted at 2-8 °C for one month or (in aliquots) at -20 °C for longer.

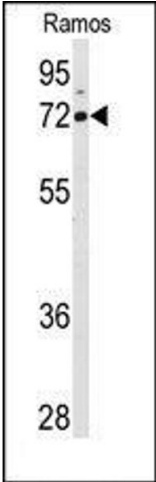


Image 1.

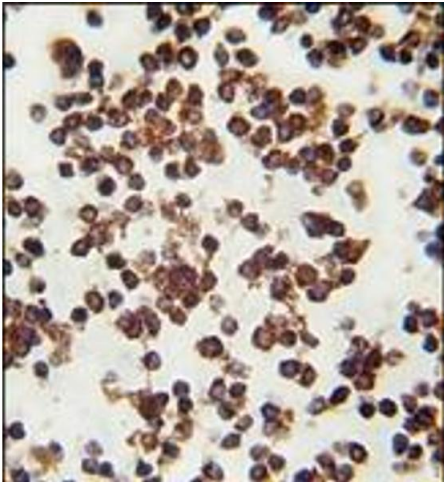


Image 2.