

Datasheet for ABIN360284

anti-MAP2K5 antibody (Ser149)

2 Images



[Go to Product page](#)

Overview

Quantity:	0.4 mL
Target:	MAP2K5
Binding Specificity:	Ser149
Reactivity:	Human
Host:	Rabbit
Clonality:	Polyclonal
Conjugate:	This MAP2K5 antibody is un-conjugated
Application:	Western Blotting (WB), Immunohistochemistry (Paraffin-embedded Sections) (IHC (p)), Enzyme Immunoassay (EIA)

Product Details

Immunogen:	This antibody is generated from rabbits immunized with a KLH conjugated synthetic peptide corresponding to amino acid residues surrounding S149 of human MAP2K5.
Isotype:	Ig Fraction
Specificity:	This antibody reacts to MAP2K5.
Purification:	Protein A column, followed by peptide affinity purification

Target Details

Target:	MAP2K5
Alternative Name:	MAP2K5 (MAP2K5 Products)

Target Details

Background:	MAP2K5 is a dual specificity protein kinase that belongs to the MAP kinase kinase family. It specifically interacts with and activates MAPK7/ERK5. This kinase itself can be phosphorylated and activated by MAP3K3/MEKK3, as well as by atypical protein kinase C isoforms (aPKCs). The signal cascade mediated by MAP2K5 is involved in growth factor stimulated cell proliferation and muscle cell differentiation.Synonyms: Dual specificity mitogen-activated protein kinase kinase 5, MAP kinase kinase 5, MAPKK 5, MEK5, MKK5
Gene ID:	5607, 9606
UniProt:	Q13163
Pathways:	MAPK Signaling , Neurotrophin Signaling Pathway

Application Details

Application Notes:	ELISA: 1/1,000. Western blotting: 1/50 - 1/100. Immunohistochemistry: 1/10 - 1/50. Other applications not tested. Optimal dilutions are dependent on conditions and should be determined by the user.
Restrictions:	For Research Use only

Handling

Format:	Liquid
Concentration:	0.25 mg/mL
Buffer:	PBS with 0.09 % (W/V) sodium azide
Preservative:	Sodium azide
Precaution of Use:	This product contains sodium azide: a POISONOUS AND HAZARDOUS SUBSTANCE which should be handled by trained staff only.
Handling Advice:	Avoid repeated freezing and thawing.
Storage:	4 °C/-20 °C
Storage Comment:	Store the antibody undiluted at 2-8 °C for one month or (in aliquots) at -20 °C for longer.

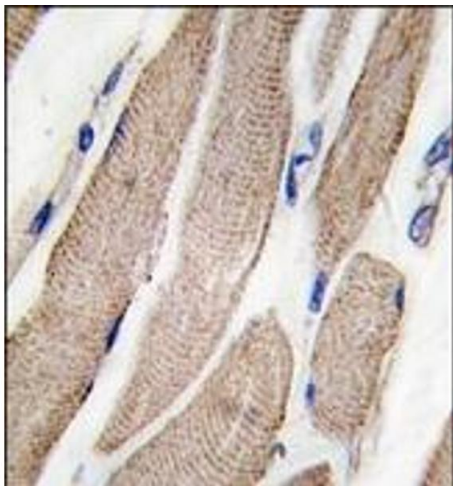


Image 1.

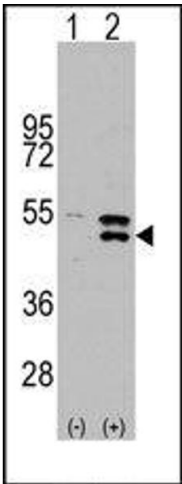


Image 2.