

Datasheet for ABIN360307
anti-MAP3K9 antibody (C-Term)

2 Images

[Go to Product page](#)

Overview

Quantity:	0.4 mL
Target:	MAP3K9
Binding Specificity:	C-Term
Reactivity:	Human, Mouse, Rat
Host:	Rabbit
Clonality:	Polyclonal
Conjugate:	This MAP3K9 antibody is un-conjugated
Application:	Western Blotting (WB), Immunohistochemistry (Paraffin-embedded Sections) (IHC (p)), Enzyme Immunoassay (EIA)

Product Details

Immunogen:	This antibody is generated from rabbits immunized with a KLH conjugated synthetic peptide selected from the C-terminal region of human MLK1.
Isotype:	Ig Fraction
Specificity:	This antibody reacts to MLK1.
Purification:	Protein G column, eluted with high and low pH buffers and neutralized immediately, followed by dialysis against PBS

Target Details

Target:	MAP3K9
Alternative Name:	MAP3K9 (MAP3K9 Products)

Target Details

Background: MLK1 is a MLK(MAP3K) type protein kinase. The catalytic domain of mixed-lineage kinases (MLKs) kinases have amino acid sequence similarity to both the tyr-specific and the ser/thr-specific kinase classes. In addition to the unusual nature of the kinase catalytic domains, MLK1 and MLK2 contain 2 leu/ile-zipper motifs and a basic sequence near their C-termini. MLK1 is a member of the neuronal apoptotic JNK/c-Jun pathway acting between Rac1/Cdc42 and MKK4 and -7 in death signaling. MLK1 expression has been documented in human epithelial tumor cell lines of colonic, breast and esophageal origin. Synonyms: M3K9, MAP Kinase Kinase Kinase 9, MLK1, Mitogen-activated protein kinase kinase kinase 9, PRKE1

Gene ID: 4293, 9606

UniProt: [P80192](#)

Application Details

Application Notes: ELISA: 1/1,000. Western blotting: 1/100 - 1/500. Immunohistochemistry: 1/50 - 1/100.
Other applications not tested.
Optimal dilutions are dependent on conditions and should be determined by the user.

Restrictions: For Research Use only

Handling

Format: Liquid

Concentration: 0.25 mg/mL

Buffer: PBS with 0.09 % (W/V) sodium azide

Preservative: Sodium azide

Precaution of Use: This product contains sodium azide: a POISONOUS AND HAZARDOUS SUBSTANCE which should be handled by trained staff only.

Handling Advice: Avoid repeated freezing and thawing.

Storage: 4 °C/-20 °C

Storage Comment: Store the antibody undiluted at 2-8 °C for one month or (in aliquots) at -20 °C for longer.

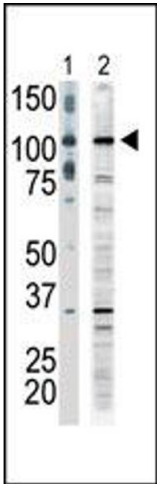


Image 1.

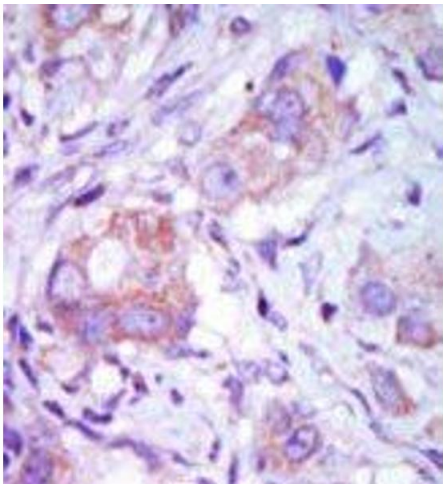


Image 2.