

Datasheet for ABIN360419  
**anti-PTGIS antibody (N-Term)**

2 Images



[Go to Product page](#)

## Overview

Quantity:	0.4 mL
Target:	PTGIS
Binding Specificity:	N-Term
Reactivity:	Human, Mouse
Host:	Rabbit
Clonality:	Polyclonal
Conjugate:	This PTGIS antibody is un-conjugated
Application:	Western Blotting (WB), Immunohistochemistry (Paraffin-embedded Sections) (IHC (p)), Enzyme Immunoassay (EIA)

## Product Details

Immunogen:	This antibody is generated from rabbits immunized with a KLH conjugated synthetic peptide selected from the N-terminal region of human CYP8A1.
Isotype:	Ig Fraction
Specificity:	This antibody reacts to CYP8A1.
Purification:	Prepared by Saturated Ammonium Sulfate (SAS) precipitation followed by dialysis against PBS

## Target Details

Target:	PTGIS
Alternative Name:	PTGIS ( <a href="#">PTGIS Products</a> )

## Target Details

**Background:** CYP8A1 is a member of the cytochrome P450 superfamily of enzymes. The cytochrome P450 proteins are monooxygenases which catalyze many reactions involved in drug metabolism and synthesis of cholesterol, steroids and other lipids. However, this protein is considered a member of the cytochrome P450 superfamily on the basis of sequence similarity rather than functional similarity. This endoplasmic reticulum membrane protein catalyzes the conversion of prostglandin H2 to prostacyclin (prostaglandin I2), a potent vasodilator and inhibitor of platelet aggregation. An imbalance of prostacyclin and its physiological antagonist thromboxane A2 contribute to the development of myocardial infarction, stroke, and atherosclerosis. Synonyms: CYP8, CYP8A1, Prostacyclin Synthase, Prostaglandin I2 Synthase

**Gene ID:** 5740, 9606

**UniProt:** [Q16647](#)

## Application Details

**Application Notes:** ELISA: 1/1,000. Western blotting: 1/50 - 1/100. Immunohistochemistry: 1/10 - 1/50.  
Other applications not tested.  
Optimal dilutions are dependent on conditions and should be determined by the user.

**Restrictions:** For Research Use only

## Handling

**Format:** Liquid

**Concentration:** 0.25 mg/mL

**Buffer:** PBS with 0.09 % (W/V) sodium azide

**Preservative:** Sodium azide

**Precaution of Use:** This product contains sodium azide: a POISONOUS AND HAZARDOUS SUBSTANCE which should be handled by trained staff only.

**Handling Advice:** Avoid repeated freezing and thawing.

**Storage:** 4 °C/-20 °C

**Storage Comment:** Store the antibody undiluted at 2-8 °C for one month or (in aliquots) at -20 °C for longer.

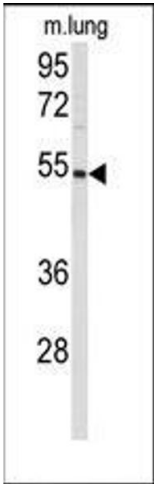


Image 1.

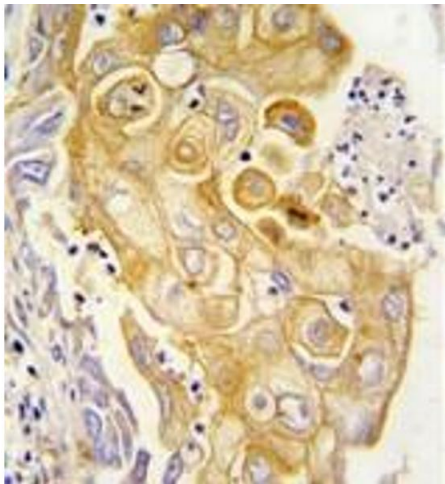


Image 2.