

Datasheet for ABIN360423  
**anti-PRKG2 antibody (C-Term)**[Go to Product page](#)

## 2 Images

## Overview

Quantity:	0.4 mL
Target:	PRKG2
Binding Specificity:	C-Term
Reactivity:	Human
Host:	Rabbit
Clonality:	Polyclonal
Conjugate:	This PRKG2 antibody is un-conjugated
Application:	Western Blotting (WB), Immunohistochemistry (Paraffin-embedded Sections) (IHC (p)), Enzyme Immunoassay (EIA)

## Product Details

Immunogen:	This antibody is generated from rabbits immunized with a KLH conjugated synthetic peptide selected from the C-terminal region of human cGKII.
Isotype:	Ig Fraction
Specificity:	This antibody reacts to cGKII.
Purification:	Protein G column, eluted with high and low pH buffers and neutralized immediately, followed by dialysis against PBS

## Target Details

Target:	PRKG2
Alternative Name:	CGK2 ( <a href="#">PRKG2 Products</a> )

## Target Details

**Background:** CGKII is thought to play a key role in a diverse set of physiological pathway. cGKII may mediate intestinal secretion of water and electrolytes induced by the E. coli toxin STa and the intestinal peptide guanylin. Edentification of the pathway that mediates intestinal fluid secretion by E. coli STa has potential medical implications because STa causes traveler's diarrhea and about 50 % of infant mortality in developing countries. Transfection experiments in human cells disclose that cGKII phosphorylates SOX9 and attenuates SOX9 function by inhibiting its nuclear entry. Impaired differentiation of cultured KMI chondrocytes can be restored by silencing Sox9 by RNA interference. cGKII is postulated to be a molecular switch that couples the cessation of proliferation and the start of hypertrophic chondrocyte differentiation through attenuating SOX9 function.Synonyms: PRKG2, PRKGR2, Type II cGMP-dependent protein kinase, cGKII, cGMP-dependent protein kinase 2

**Gene ID:** 5593, 9606

**UniProt:** [Q13237](#)

## Application Details

**Application Notes:** ELISA: 1/1,000. Immunohistochemistry: 1/50 - 1/100. Western Blot: 1/100 - 1/500.  
Other applications not tested.  
Optimal dilutions are dependent on conditions and should be determined by the user.

**Restrictions:** For Research Use only

## Handling

**Format:** Liquid

**Concentration:** 0.25 mg/mL

**Buffer:** PBS with 0.09 % (W/V) sodium azide

**Preservative:** Sodium azide

**Precaution of Use:** This product contains sodium azide: a POISONOUS AND HAZARDOUS SUBSTANCE which should be handled by trained staff only.

**Handling Advice:** Avoid repeated freezing and thawing.

**Storage:** 4 °C/-20 °C

**Storage Comment:** Store the antibody undiluted at 2-8 °C for one month or (in aliquots) at -20 °C for longer.

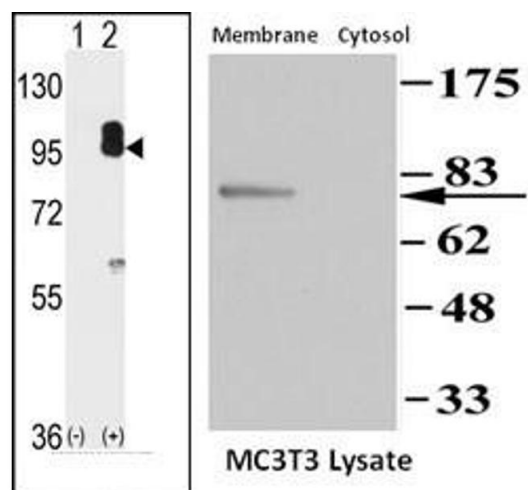


Image 1.

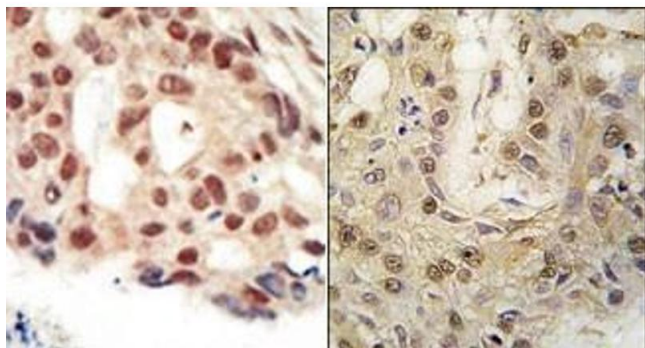


Image 2.