

Datasheet for ABIN360425
anti-MARK2 antibody (C-Term)



[Go to Product page](#)

2 Images

Overview

Quantity:	0.4 mL
Target:	MARK2
Binding Specificity:	C-Term
Reactivity:	Human, Mouse
Host:	Rabbit
Clonality:	Polyclonal
Conjugate:	This MARK2 antibody is un-conjugated
Application:	Western Blotting (WB), Immunohistochemistry (Paraffin-embedded Sections) (IHC (p)), Enzyme Immunoassay (EIA)

Product Details

Immunogen:	This antibody is generated from rabbits immunized with a KLH conjugated synthetic peptide selected from the C-terminal region of human EMK.
Isotype:	Ig Fraction
Specificity:	This antibody reacts to MARK2 (EMK).
Purification:	Protein G column, eluted with high and low pH buffers and neutralized immediately, followed by dialysis against PBS

Target Details

Target:	MARK2
Alternative Name:	MARK2 (MARK2 Products)

Target Details

Background: Protein kinases are enzymes that transfer a phosphate group from a phosphate donor, generally the γ phosphate of ATP, onto an acceptor amino acid in a substrate protein. By this basic mechanism, protein kinases mediate most of the signal transduction in eukaryotic cells, regulating cellular metabolism, transcription, cell cycle progression, cytoskeletal rearrangement and cell movement, apoptosis, and differentiation. With more than 500 gene products, the protein kinase family is one of the largest families of proteins in eukaryotes. The family has been classified in 8 major groups based on sequence comparison of their tyrosine (PTK) or serine/threonine (STK) kinase catalytic domains. Synonyms: 2, ELKL motif kinase, EMK1, MAP/microtubule affinity-regulating kinase, MARK2, PAR1 homolog, Serine/threonine-protein kinase

Gene ID: 2011

NCBI Accession: [NP_001034557](#)

UniProt: [Q7KZI7](#)

Pathways: [SARS-CoV-2 Protein Interactome](#), [The Global Phosphorylation Landscape of SARS-CoV-2 Infection](#)

Application Details

Application Notes: ELISA: 1/1,000. Immunohistochemistry: 1/50 - 1/100. Western Blot: 1/250 - 1/500.
Other applications not tested.
Optimal dilutions are dependent on conditions and should be determined by the user.

Restrictions: For Research Use only

Handling

Format: Liquid

Concentration: 0.25 mg/mL

Buffer: PBS with 0.09 % (W/V) sodium azide

Preservative: Sodium azide

Precaution of Use: This product contains sodium azide: a POISONOUS AND HAZARDOUS SUBSTANCE which should be handled by trained staff only.

Handling Advice: Avoid repeated freezing and thawing.

Storage: 4 °C/-20 °C

Handling

Storage Comment: Store the antibody undiluted at 2-8 °C for one month or (in aliquots) at-20 °C for longer.

Images

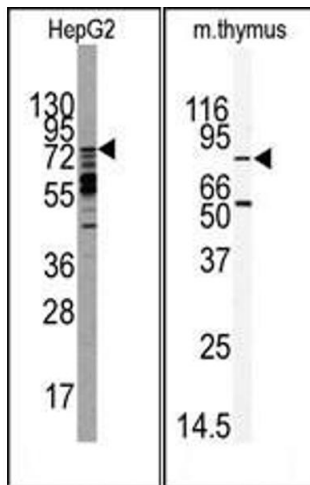


Image 1.

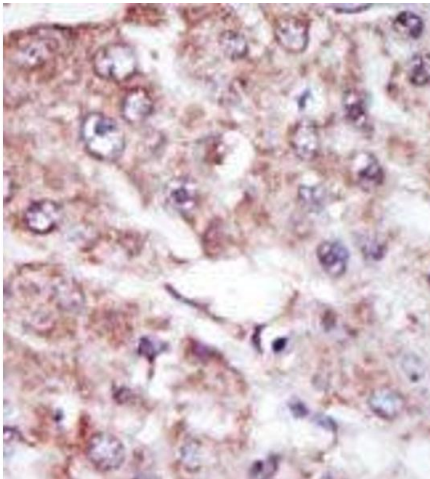


Image 2.