



[Go to Product page](#)

Datasheet for ABIN360441

anti-LDLRAP1 antibody (C-Term)

2 Images

Overview

Quantity:	0.4 mL
Target:	LDLRAP1
Binding Specificity:	C-Term
Reactivity:	Human
Host:	Rabbit
Clonality:	Polyclonal
Conjugate:	This LDLRAP1 antibody is un-conjugated
Application:	Western Blotting (WB), Immunohistochemistry (Paraffin-embedded Sections) (IHC (p)), Enzyme Immunoassay (EIA)

Product Details

Immunogen:	This antibody is generated from rabbits immunized with a KLH conjugated synthetic peptide selected from the C-terminal region of human LDLRAP1.
Isotype:	Ig Fraction
Specificity:	This antibody reacts to ARH (LDLRAP1).
Purification:	Protein A column, eluted with high and low pH buffers and neutralized immediately, followed by dialysis against PBS

Target Details

Target:	LDLRAP1
Alternative Name:	LDLRAP1 (LDLRAP1 Products)

Target Details

Background: LDLRAP1 is a cytosolic protein which contains a phosphotyrosine binding (PTD) domain. The PTD domain has been found to interact with the cytoplasmic tail of the LDL receptor. This adapter protein is required for efficient endocytosis of the LDL receptor (LDLR) in polarized cells such as hepatocytes and lymphocytes, but not in non-polarized cells (fibroblasts). LDLRAP1 may be required for LDL binding and internalization but not for receptor clustering in coated pits. This protein may facilitate the endocytosis of LDLR and LDLR-LDL complexes from coated pits by stabilizing the interaction between the receptor and the structural components of the pits, and may also be involved in the internalization of other LDLR family members. Mutations in the LDLRAP1 gene lead to LDL receptor malfunction and cause the disorder autosomal recessive hypercholesterolaemia. Synonyms: ARH, Autosomal recessive hypercholesterolemia protein, LDLRAP1, Low density lipoprotein receptor adapter protein 1

Gene ID: 26119, 9606

UniProt: [Q5SW96](#)

Pathways: [Lipid Metabolism](#)

Application Details

Application Notes: ELISA: 1/1,000. Western blotting: 1/50 - 1/100. Immunohistochemistry: 1/50.
Other applications not tested.
Optimal dilutions are dependent on conditions and should be determined by the user.

Restrictions: For Research Use only

Handling

Format: Liquid

Concentration: 0.25 mg/mL

Buffer: PBS with 0.09 % (W/V) sodium azide

Preservative: Sodium azide

Precaution of Use: This product contains sodium azide: a POISONOUS AND HAZARDOUS SUBSTANCE which should be handled by trained staff only.

Handling Advice: Avoid repeated freezing and thawing.

Storage: 4 °C/-20 °C

Storage Comment: Store the antibody undiluted at 2-8 °C for one month or (in aliquots) at -20 °C for longer.

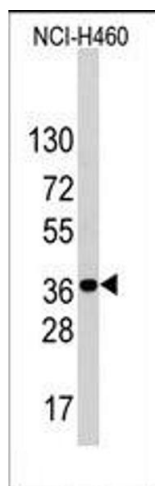


Image 1.

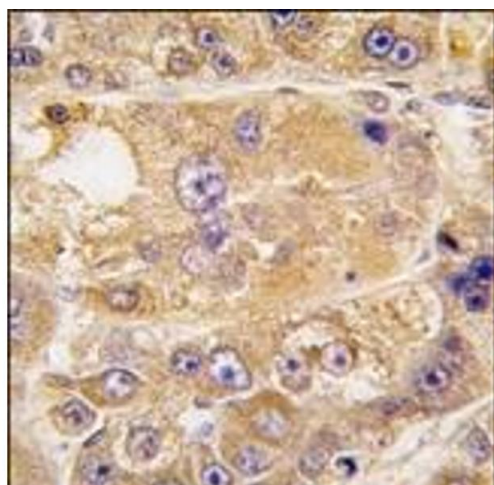


Image 2.