

Datasheet for ABIN360445

**anti-PIK3CA antibody (Middle Region)**[Go to Product page](#)**2** Images

## Overview

Quantity:	0.4 mL
Target:	PIK3CA
Binding Specificity:	Middle Region
Reactivity:	Human
Host:	Rabbit
Clonality:	Polyclonal
Conjugate:	This PIK3CA antibody is un-conjugated
Application:	Western Blotting (WB), Immunohistochemistry (Paraffin-embedded Sections) (IHC (p)), Enzyme Immunoassay (EIA)

## Product Details

Immunogen:	This antibody is generated from rabbits immunized with a KLH conjugated synthetic peptide selected from the the center region of human PI3KCA.
Isotype:	Ig Fraction
Specificity:	This antibody reacts to PI3KCA.
Purification:	Protein G column, eluted with high and low pH buffers and neutralized immediately, followed by dialysis against PBS

## Target Details

Target:	PIK3CA
Alternative Name:	PIK3CA ( <a href="#">PIK3CA Products</a> )

## Target Details

Background:	Phosphatidylinositol 3-kinase is composed of an 85 kDa regulatory subunit and a 110 kDa catalytic subunit. The protein encoded by this gene represents the catalytic subunit, which uses ATP to phosphorylate PtdIns, PtdIns4P and PtdIns(4,5)P2. This gene has been found to be oncogenic and has been implicated in cervical cancers.Synonyms: 5-bisphosphate 3-kinase catalytic subunit alpha isoform, EC=2.7.1.153, PI3-kinase p110 subunit alpha, PI3K, PIK3CA, Phosphatidylinositol-4, PtdIns-3-kinase p110
Gene ID:	5290, 9606
UniProt:	<a href="#">P42336</a>
Pathways:	<a href="#">PI3K-Akt Signaling</a> , <a href="#">RTK Signaling</a> , <a href="#">TCR Signaling</a> , <a href="#">AMPK Signaling</a> , <a href="#">Interferon-gamma Pathway</a> , <a href="#">TLR Signaling</a> , <a href="#">Fc-epsilon Receptor Signaling Pathway</a> , <a href="#">EGFR Signaling Pathway</a> , <a href="#">Neurotrophin Signaling Pathway</a> , <a href="#">Inositol Metabolic Process</a> , <a href="#">Hepatitis C</a> , <a href="#">CXCR4-mediated Signaling Events</a> , <a href="#">Signaling Events mediated by VEGFR1 and VEGFR2</a> , <a href="#">Signaling of Hepatocyte Growth Factor Receptor</a> , <a href="#">VEGFR1 Specific Signals</a> , <a href="#">VEGF Signaling</a>

## Application Details

Application Notes:	ELISA: 1/1,000. Western blotting: 1/50 - 1/100. Immunohistochemistry: 1/50 - 1/100. Other applications not tested. Optimal dilutions are dependent on conditions and should be determined by the user.
Restrictions:	For Research Use only

## Handling

Format:	Liquid
Concentration:	0.25 mg/mL
Buffer:	PBS with 0.09 % (W/V) sodium azide
Preservative:	Sodium azide
Precaution of Use:	This product contains sodium azide: a POISONOUS AND HAZARDOUS SUBSTANCE which should be handled by trained staff only.
Handling Advice:	Avoid repeated freezing and thawing.
Storage:	4 °C/-20 °C
Storage Comment:	Store the antibody undiluted at 2-8 °C for one month or (in aliquots) at -20 °C for longer.

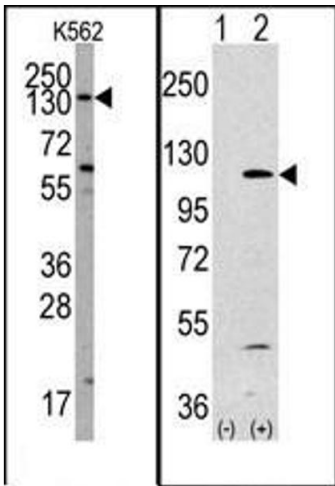


Image 1.

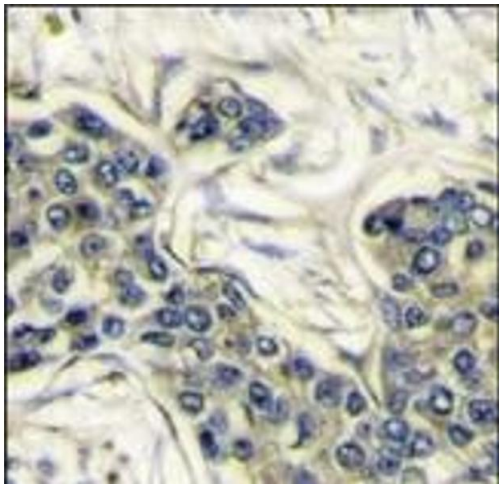


Image 2.