



Datasheet for ABIN360452

## anti-PIK3 gamma antibody (C-Term)



[Go to Product page](#)

### 2 Images

#### Overview

Quantity:	0.4 mL
Target:	PIK3 gamma (PIK3CG)
Binding Specificity:	AA 1073-1102, C-Term
Reactivity:	Human
Host:	Rabbit
Clonality:	Polyclonal
Conjugate:	This PIK3 gamma antibody is un-conjugated
Application:	Western Blotting (WB), Immunohistochemistry (Paraffin-embedded Sections) (IHC (p)), Enzyme Immunoassay (EIA)

#### Product Details

Immunogen:	This PI3KCG antibody is generated from rabbits immunized with a KLH conjugated synthetic peptide between 1073~1102 amino acids from the C-terminal region of Human PI3KCG.
Isotype:	Ig Fraction
Specificity:	This antibody reacts to PI3KCG.
Purification:	Protein G column, eluted with high and low pH buffers and neutralized immediately, followed by dialysis against PBS

#### Target Details

Target:	PIK3 gamma (PIK3CG)
Alternative Name:	PIK3CG ( <a href="#">PIK3CG Products</a> )

## Target Details

---

Background:	PI3KCG belongs to the pi3/pi4-kinase family of proteins. This protein is an enzyme that phosphorylates phosphoinositides on the 3-hydroxyl group of the inositol ring. It is an important modulator of extracellular signals, including those elicited by E-cadherin-mediated cell-cell adhesion, which plays an important role in maintenance of the structural and functional integrity of epithelia. In addition to its role in promoting assembly of adherens junctions, the protein is thought to play a pivotal role in the regulation of cytotoxicity in NK cells. Synonyms: 5-bisphosphate 3-kinase catalytic subunit gamma isoform, PI3-kinase subunit gamma, PI3K-gamma, Phosphatidylinositol-4, PtdIns-3-kinase subunit p110-gamma, p120-PI3K
Gene ID:	5294, 9606
UniProt:	<a href="#">P48736</a>
Pathways:	<a href="#">PI3K-Akt Signaling</a> , <a href="#">RTK Signaling</a> , <a href="#">AMPK Signaling</a> , <a href="#">TLR Signaling</a> , <a href="#">Inositol Metabolic Process</a> , <a href="#">Hepatitis C</a> , <a href="#">VEGF Signaling</a>

## Application Details

---

Application Notes:	ELISA: 1/1,000. Immunohistochemistry: 1/50 - 1/100. Other applications not tested. Optimal dilutions are dependent on conditions and should be determined by the user.
Restrictions:	For Research Use only

## Handling

---

Format:	Liquid
Concentration:	0.25 mg/mL
Buffer:	PBS with 0.09 % (W/V) sodium azide
Preservative:	Sodium azide
Precaution of Use:	This product contains sodium azide: a POISONOUS AND HAZARDOUS SUBSTANCE which should be handled by trained staff only.
Handling Advice:	Avoid repeated freezing and thawing.
Storage:	4 °C/-20 °C
Storage Comment:	Store the antibody undiluted at 2-8 °C for one month or (in aliquots) at -20 °C for longer.

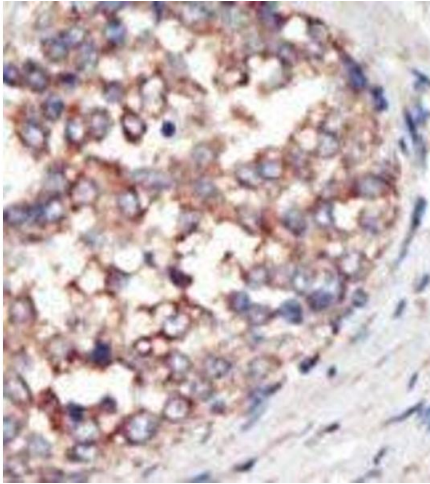


Image 1.

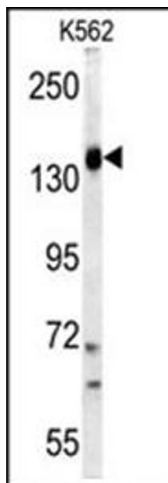


Image 2.