



[Go to Product page](#)

Datasheet for ABIN360465

## anti-PIK3R2 antibody (N-Term)

### 2 Images

#### Overview

Quantity:	0.4 mL
Target:	PIK3R2 (PI3K p85b)
Binding Specificity:	N-Term
Reactivity:	Human
Host:	Rabbit
Clonality:	Polyclonal
Conjugate:	This PIK3R2 antibody is un-conjugated
Application:	Western Blotting (WB), Immunohistochemistry (Paraffin-embedded Sections) (IHC (p)), Enzyme Immunoassay (EIA)

#### Product Details

Immunogen:	This antibody is generated from rabbits immunized with a KLH conjugated synthetic peptide selected from the N-terminal region of human PIK3R2.
Isotype:	Ig Fraction
Specificity:	This antibody reacts to PIK3R2.
Purification:	Protein A column, eluted with high and low pH buffers and neutralized immediately, followed by dialysis against PBS

#### Target Details

Target:	PIK3R2 (PI3K p85b)
Alternative Name:	PIK3R2 ( <a href="#">PI3K p85b Products</a> )

## Target Details

---

**Background:** Protein kinases are enzymes that transfer a phosphate group from a phosphate donor, generally the  $\gamma$  phosphate of ATP, onto an acceptor amino acid in a substrate protein. By this basic mechanism, protein kinases mediate most of the signal transduction in eukaryotic cells, regulating cellular metabolism, transcription, cell cycle progression, cytoskeletal rearrangement and cell movement, apoptosis, and differentiation. The family has been classified in 8 major groups based on sequence comparison of their tyrosine (PTK) or serine/threonine (STK) kinase catalytic domains. PIK3R2 binds to activated Protein Tyrosine Kinases, which are phosphorylated, through its SH2 domain, and acts as an adaptor, mediating the association of the P110 catalytic unit to the plasma membrane. Synonyms: PI 3 Kinase p85 beta, PI3-kinase regulatory subunit beta, PI3K regulatory subunit beta, Phosphatidylinositol 3-kinase 85 kDa regulatory subunit beta, Phosphatidylinositol 3-kinase regulatory subunit beta

**Gene ID:** 5296, 9606

**UniProt:** [O00459](#)

**Pathways:** [VEGF Signaling](#), [BCR Signaling](#)

## Application Details

---

**Application Notes:** ELISA: 1/1,000. Western blotting: 1/100 - 1/500. Immunohistochemistry: 1/50 - 1/100.  
Other applications not tested.  
Optimal dilutions are dependent on conditions and should be determined by the user.

**Restrictions:** For Research Use only

## Handling

---

**Format:** Liquid

**Concentration:** 0.25 mg/mL

**Buffer:** PBS with 0.09 % (W/V) sodium azide

**Preservative:** Sodium azide

**Precaution of Use:** This product contains sodium azide: a POISONOUS AND HAZARDOUS SUBSTANCE which should be handled by trained staff only.

**Handling Advice:** Avoid repeated freezing and thawing.

**Storage:** 4 °C/-20 °C

**Storage Comment:** Store the antibody undiluted at 2-8 °C for one month or (in aliquots) at -20 °C for longer.

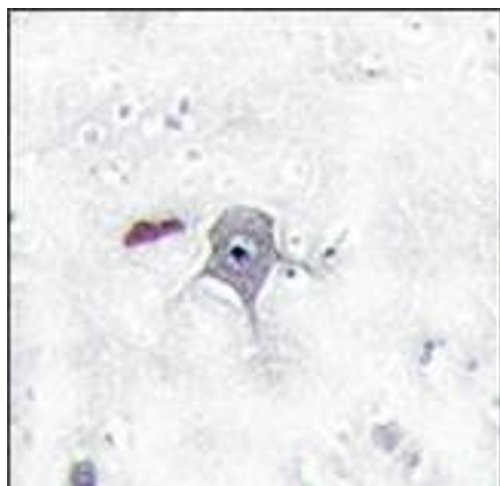


Image 1.

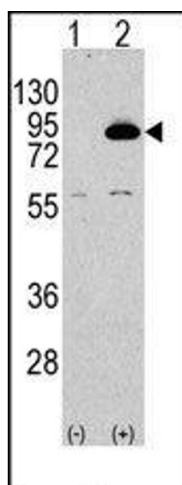


Image 2.