



[Go to Product page](#)

Datasheet for ABIN360472

anti-PI4K2A antibody (N-Term)

2 Images

Overview

Quantity:	0.4 mL
Target:	PI4K2A
Binding Specificity:	N-Term
Reactivity:	Human
Host:	Rabbit
Clonality:	Polyclonal
Conjugate:	This PI4K2A antibody is un-conjugated
Application:	Western Blotting (WB), Immunohistochemistry (Paraffin-embedded Sections) (IHC (p)), Enzyme Immunoassay (EIA)

Product Details

Immunogen:	This antibody is generated from rabbits immunized with a KLH conjugated synthetic peptide selected from the N-terminal region of human PI4K II.
Isotype:	Ig Fraction
Specificity:	This antibody reacts to PI4K2A.
Purification:	Protein G column, eluted with high and low pH buffers and neutralized immediately, followed by dialysis against PBS

Target Details

Target:	PI4K2A
Alternative Name:	PI4K2A (PI4K2A Products)

Target Details

Background: Phosphatidylinositolpolyphosphates (PtdInsPs) are centrally involved in many biologic processes, ranging from cell growth and organization of the actin cytoskeleton to endo- and exocytosis. PI4KII phosphorylates PtdIns at the D-4 position, an essential step in the biosynthesis of PtdInsPs. PI4K II is activated by detergent and inhibited by adenosine. Overexpression of PI4KII in COS-7 cells increases synthesis of PtdIns4P. Some cells overexpressing PI4KII have scattered or no perinuclear Golgi. Knockdown of PI4KII by RNA interference (RNAi) does not disrupt the Golgi, and some cells show expanded Golgi. RNAi reduces the Golgi level of PtdIns4P and blocks the association between AP1 and the trans-Golgi network. PI4KII RNAi had little effect on intra-Golgi trafficking, but it inhibited export to plasma membrane export by 35 % . It has been proposed that PI4KII generates PtdIns4P-rich domains within the Golgi that specify docking of the AP1 coat machinery.Synonyms: Phosphatidylinositol 4-kinase type 2-alpha, Phosphatidylinositol 4-kinase type II-alpha

Gene ID: 55361, 9606

UniProt: [Q9BTU6](#)

Pathways: [Inositol Metabolic Process](#), [Synaptic Membrane](#)

Application Details

Application Notes: ELISA: 1/1,000. Western blotting: 1/100 - 1/500. Immunohistochemistry: 1/50 - 1/100. Other applications not tested. Optimal dilutions are dependent on conditions and should be determined by the user.

Restrictions: For Research Use only

Handling

Format: Liquid

Concentration: 0.25 mg/mL

Buffer: PBS with 0.09 % (W/V) sodium azide

Preservative: Sodium azide

Precaution of Use: This product contains sodium azide: a POISONOUS AND HAZARDOUS SUBSTANCE which should be handled by trained staff only.

Handling Advice: Avoid repeated freezing and thawing.

Storage: 4 °C/-20 °C

Handling

Storage Comment: Store the antibody undiluted at 2-8 °C for one month or (in aliquots) at -20 °C for longer.

Validation report #103692 for Proximity Ligation Assay (PLA)

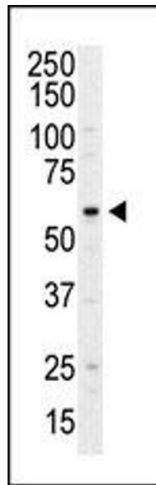


Image 1.

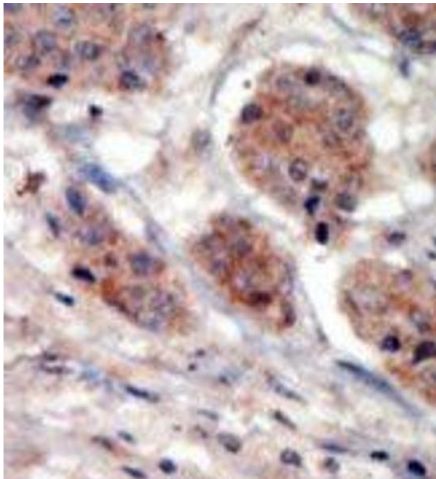


Image 2.