

Datasheet for ABIN360481  
**anti-PIP5K1C antibody (C-Term)**[Go to Product page](#)

## 2 Images

## Overview

Quantity:	0.4 mL
Target:	PIP5K1C
Binding Specificity:	C-Term
Reactivity:	Human
Host:	Rabbit
Clonality:	Polyclonal
Conjugate:	This PIP5K1C antibody is un-conjugated
Application:	Western Blotting (WB), Immunohistochemistry (Paraffin-embedded Sections) (IHC (p)), Enzyme Immunoassay (EIA)

## Product Details

Immunogen:	This antibody is generated from rabbits immunized with a KLH conjugated synthetic peptide selected from the C-terminal region of human PIP5K1G.
Isotype:	Ig Fraction
Specificity:	This antibody reacts to PIP5KI gamma.
Purification:	Protein G column, eluted with high and low pH buffers and neutralized immediately, followed by dialysis against PBS

## Target Details

Target:	PIP5K1C
Alternative Name:	PIP5K1C ( <a href="#">PIP5K1C Products</a> )

## Target Details

Background:	PIP5K1G is a member of the type I phosphatidylinositol-4-phosphate 5-kinase family of enzymes. A similar protein in mice is found in synapses and focal adhesion plaques, and binds the FERM domain of talin through its C-terminus.Synonyms: KIAA0589, PIP5K1-gamma, PIP5KIgamma, Phosphatidylinositol-4-phosphate 5-kinase type-1 gamma, PtdIns(4)P-5-kinase 1 gamma
Gene ID:	23396, 9606
UniProt:	<a href="#">O60331</a>
Pathways:	<a href="#">PI3K-Akt Signaling</a> , <a href="#">Inositol Metabolic Process</a> , <a href="#">Cell-Cell Junction Organization</a> , <a href="#">Maintenance of Protein Location</a> , <a href="#">Synaptic Vesicle Exocytosis</a>

## Application Details

Application Notes:	ELISA: 1/1,000. Western blotting: 1/100 - 1/500. Immunohistochemistry: 1/50 - 1/100. Other applications not tested. Optimal dilutions are dependent on conditions and should be determined by the user.
Restrictions:	For Research Use only

## Handling

Format:	Liquid
Concentration:	0.25 mg/mL
Buffer:	PBS with 0.09 % (W/V) sodium azide
Preservative:	Sodium azide
Precaution of Use:	This product contains sodium azide: a POISONOUS AND HAZARDOUS SUBSTANCE which should be handled by trained staff only.
Handling Advice:	Avoid repeated freezing and thawing.
Storage:	4 °C/-20 °C
Storage Comment:	Store the antibody undiluted at 2-8 °C for one month or (in aliquots) at -20 °C for longer.

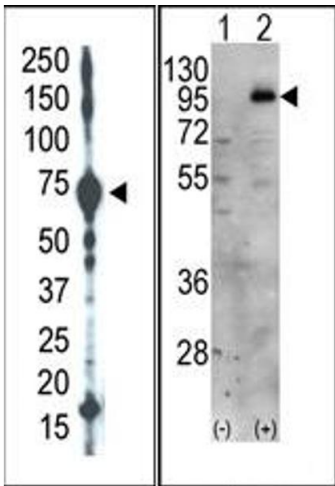


Image 1.

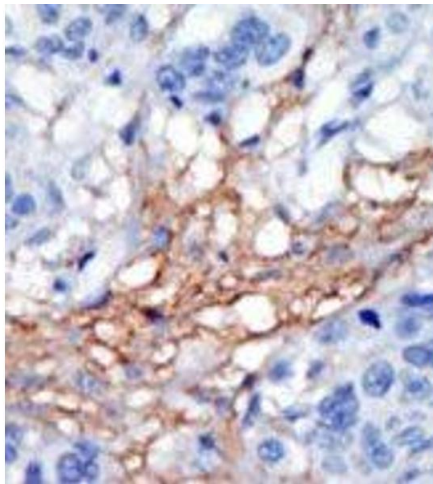


Image 2.