

Datasheet for ABIN360514
anti-BUB1 antibody (C-Term)

2 Images



[Go to Product page](#)

Overview

Quantity:	0.4 mL
Target:	BUB1
Binding Specificity:	C-Term
Reactivity:	Human
Host:	Rabbit
Clonality:	Polyclonal
Conjugate:	This BUB1 antibody is un-conjugated
Application:	Western Blotting (WB), Immunohistochemistry (Paraffin-embedded Sections) (IHC (p)), Enzyme Immunoassay (EIA)

Product Details

Immunogen:	This antibody is generated from rabbits immunized with a KLH conjugated synthetic peptide selected from the C-terminal region of human BUB1A.
Isotype:	Ig Fraction
Specificity:	This antibody reacts to BUB1 (BUB1a).
Purification:	Protein G column, eluted with high and low pH buffers and neutralized immediately, followed by dialysis against PBS

Target Details

Target:	BUB1
Alternative Name:	BUB1A (BUB1 Products)

Target Details

Background:	This gene encodes a kinase involved in spindle checkpoint function. The kinase functions in part by phosphorylating a member of the mitotic checkpoint complex and activating the spindle checkpoint. Mutations in this gene have been associated with aneuploidy and several forms of cancer.Synonyms: BUB1L, Mitotic checkpoint serine/threonine-protein kinase BUB1
Gene ID:	699, 9606
UniProt:	O43683

Application Details

Application Notes:	ELISA: 1/1,000. Western blotting: 1/100 - 1/500. Immunohistochemistry: 1/50 - 1/100. Other applications not tested. Optimal dilutions are dependent on conditions and should be determined by the user.
Restrictions:	For Research Use only

Handling

Format:	Liquid
Concentration:	0.25 mg/mL
Buffer:	PBS with 0.09 % (W/V) sodium azide
Preservative:	Sodium azide
Precaution of Use:	This product contains sodium azide: a POISONOUS AND HAZARDOUS SUBSTANCE which should be handled by trained staff only.
Handling Advice:	Avoid repeated freezing and thawing.
Storage:	4 °C/-20 °C
Storage Comment:	Store the antibody undiluted at 2-8 °C for one month or (in aliquots) at-20 °C for longer.

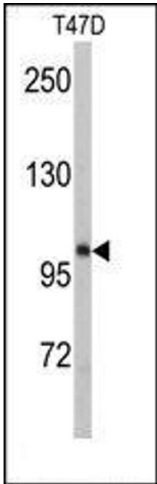


Image 1.

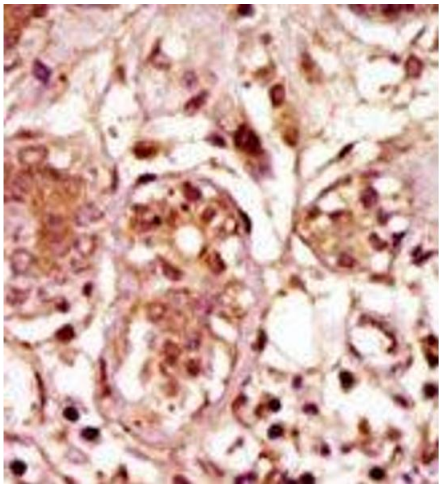


Image 2.