



[Go to Product page](#)

Datasheet for ABIN360542  
**anti-NEK7 antibody (N-Term)**

2 Images

Overview

Quantity:	0.4 mL
Target:	NEK7
Binding Specificity:	N-Term
Reactivity:	Human
Host:	Rabbit
Clonality:	Polyclonal
Conjugate:	This NEK7 antibody is un-conjugated
Application:	Western Blotting (WB), Immunohistochemistry (Paraffin-embedded Sections) (IHC (p)), Enzyme Immunoassay (EIA)

Product Details

Immunogen:	This antibody is generated from rabbits immunized with a KLH conjugated synthetic peptide selected from the N-terminal region of human NEK7.
Isotype:	Ig Fraction
Specificity:	This antibody reacts to NEK7.
Purification:	Protein G column, eluted with high and low pH buffers and neutralized immediately, followed by dialysis against PBS

Target Details

Target:	NEK7
Alternative Name:	NEK7 ( <a href="#">NEK7 Products</a> )

## Target Details

---

Background:	NIMA-related kinases share high amino acid sequence identity with the gene product of the <i>Aspergillus nidulans</i> never in mitosis A gene, which controls initiation of mitosis. Synonyms: NIMA related kinase 7, Serine/threonine-protein kinase Nek7
Gene ID:	140609, 9606
UniProt:	<a href="#">Q8TDX7</a>
Pathways:	<a href="#">Inflammasome</a>

## Application Details

---

Application Notes:	ELISA: 1/1,000. Western Blot: 1/100 - 1/500. Immunohistochemistry: 1/50 - 1/100. Other applications not tested. Optimal dilutions are dependent on conditions and should be determined by the user.
Restrictions:	For Research Use only

## Handling

---

Format:	Liquid
Concentration:	0.25 mg/mL
Buffer:	PBS with 0.09 % (W/V) sodium azide
Preservative:	Sodium azide
Precaution of Use:	This product contains sodium azide: a POISONOUS AND HAZARDOUS SUBSTANCE which should be handled by trained staff only.
Handling Advice:	Avoid repeated freezing and thawing.
Storage:	4 °C/-20 °C
Storage Comment:	Store the antibody undiluted at 2-8 °C for one month or (in aliquots) at -20 °C for longer.

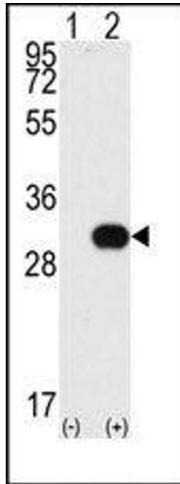


Image 1.

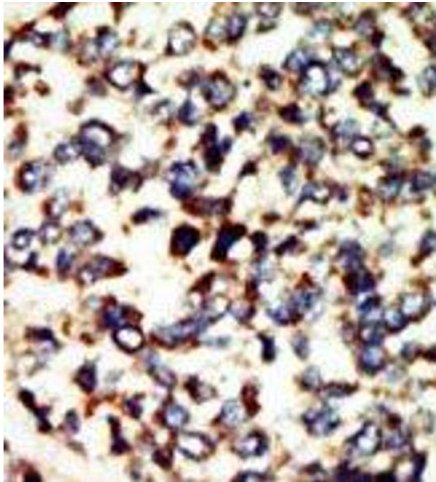


Image 2.