

Datasheet for ABIN360545
anti-NME2 antibody (N-Term)



[Go to Product page](#)

2 Images

Overview

Quantity:	0.4 mL
Target:	NME2
Binding Specificity:	N-Term
Reactivity:	Human, Mouse
Host:	Rabbit
Clonality:	Polyclonal
Conjugate:	This NME2 antibody is un-conjugated
Application:	Western Blotting (WB), Immunohistochemistry (Paraffin-embedded Sections) (IHC (p)), Enzyme Immunoassay (EIA)

Product Details

Immunogen:	This antibody is generated from rabbits immunized with a KLH conjugated synthetic peptide selected from the N-terminal region of human NME2.
Isotype:	Ig Fraction
Specificity:	This antibody reacts to NME2.
Purification:	POrotein G column, eluted with high and low pH buffers and neutralized immediately, followed by dialysis against PBS

Target Details

Target:	NME2
Alternative Name:	NDP Kinase B / NME2 (NME2 Products)

Target Details

Background: NM2 is a heterodimeric protein functioning as a nucleoside diphosphate (NDP) kinase. NME1 and NME2 comprise the 152 amino acid A and B polypeptide chains of the NM23 enzyme, respectively. NME2 is identical to the beta subunit of human erythrocyte NDP kinase. NDP kinases are involved in the synthesis of nucleoside triphosphates, and NM23 may act in the regulation of signal transduction by complexing with G proteins, causing activation/inactivation of developmental pathways. NEM2 has been identified as a putative tumor suppressor. High expression of mouse NME2 is detected in heart, liver, and kidney, with moderate expression in skeletal muscle, and negligible expression in other mouse tissues examined. Synonyms: C-myc purine-binding transcription factor PUF, NDK B, NM23B, Nucleoside diphosphate kinase B

Gene ID: 4831, 9606

UniProt: [P22392](#)

Application Details

Application Notes: ELISA: 1/1,000. Western blotting: 1/100 - 1/500. Immunohistochemistry: 1/50 - 1/100.
Other applications not tested.
Optimal dilutions are dependent on conditions and should be determined by the user.

Restrictions: For Research Use only

Handling

Format: Liquid

Concentration: 0.25 mg/mL

Buffer: PBS with 0.09 % (W/V) sodium azide

Preservative: Sodium azide

Precaution of Use: This product contains sodium azide: a POISONOUS AND HAZARDOUS SUBSTANCE which should be handled by trained staff only.

Handling Advice: Avoid repeated freezing and thawing.

Storage: 4 °C/-20 °C

Storage Comment: Store the antibody undiluted at 2-8 °C for one month or (in aliquots) at -20 °C for longer.

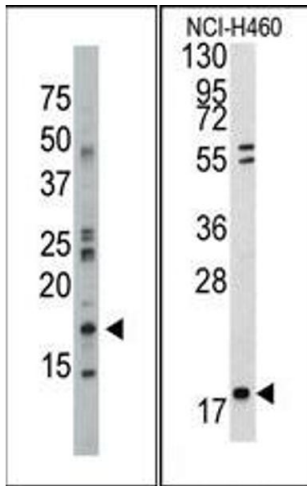


Image 1.

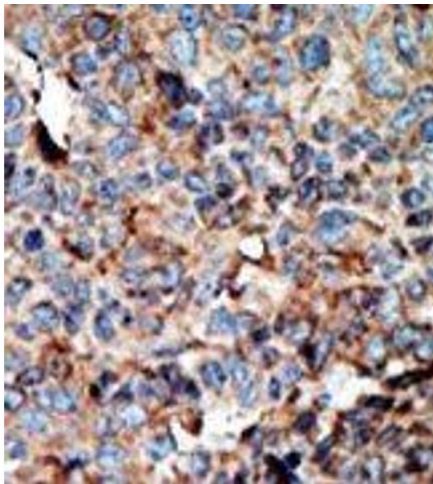


Image 2.