

Datasheet for ABIN360576  
**anti-TLK1 antibody (C-Term)**[Go to Product page](#)

## 2 Images

## Overview

Quantity:	0.4 mL
Target:	TLK1
Binding Specificity:	C-Term
Reactivity:	Human
Host:	Rabbit
Clonality:	Polyclonal
Conjugate:	This TLK1 antibody is un-conjugated
Application:	Western Blotting (WB), Immunohistochemistry (Paraffin-embedded Sections) (IHC (p)), Enzyme Immunoassay (EIA)

## Product Details

Immunogen:	This antibody is generated from rabbits immunized with a KLH conjugated synthetic peptide selected from the C-terminal region of human TLK1.
Isotype:	Ig Fraction
Specificity:	This antibody reacts to TLK1.
Purification:	Protein G column, eluted with high and low pH buffers and neutralized immediately, followed by dialysis against PBS

## Target Details

Target:	TLK1
Alternative Name:	TLK1 ( <a href="#">TLK1 Products</a> )

## Target Details

Background: The Tousled-like kinases, first described in Arabidopsis, are nuclear serine/threonine kinases that are potentially involved in the regulation of chromatin assembly.[supplied by OMIM]Synonyms: KIAA0137, PKU-beta, Serine/threonine-protein kinase tousled-like 1, Tousled-like kinase 1

Gene ID: 9874, 9606

UniProt: [Q9UKI8](#)

## Application Details

Application Notes: ELISA: 1/1,000. Western blotting: 1/100 - 1/500. Immunohistochemistry: 1/50 - 1/100.  
Other applications not tested.  
Optimal dilutions are dependent on conditions and should be determined by the user.

Restrictions: For Research Use only

## Handling

Format: Liquid

Concentration: 0.25 mg/mL

Buffer: PBS with 0.09 % (W/V) sodium azide

Preservative: Sodium azide

Precaution of Use: This product contains sodium azide: a POISONOUS AND HAZARDOUS SUBSTANCE which should be handled by trained staff only.

Handling Advice: Avoid repeated freezing and thawing.

Storage: 4 °C/-20 °C

Storage Comment: Store the antibody undiluted at 2-8 °C for one month or (in aliquots) at -20 °C for longer.

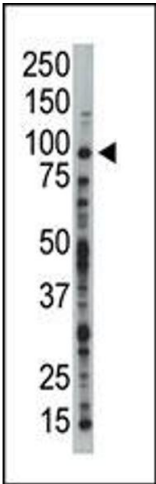


Image 1.

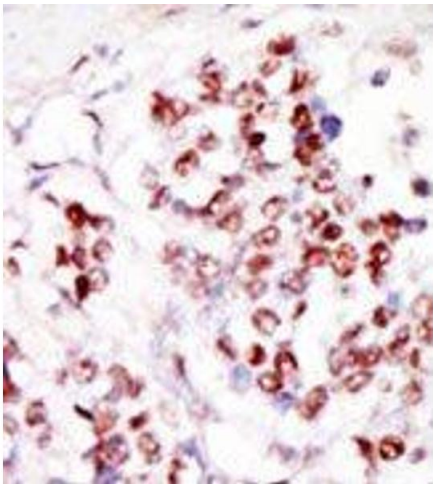


Image 2.