

Datasheet for ABIN360633
anti-PFKM antibody (C-Term)



[Go to Product page](#)

2 Images

Overview

Quantity:	0.4 mL
Target:	PFKM
Binding Specificity:	C-Term
Reactivity:	Human
Host:	Rabbit
Clonality:	Polyclonal
Conjugate:	This PFKM antibody is un-conjugated
Application:	Western Blotting (WB), Immunohistochemistry (Paraffin-embedded Sections) (IHC (p)), Enzyme Immunoassay (EIA)

Product Details

Immunogen:	This antibody is generated from rabbits immunized with a KLH conjugated synthetic peptide selected from the C-terminal region of human PFKM.
Isotype:	Ig Fraction
Specificity:	This antibody reacts to PFKM.
Purification:	Protein G column, eluted with high and low pH buffers and neutralized immediately, followed by dialysis against PBS

Target Details

Target:	PFKM
Alternative Name:	PFKM (PFKM Products)

Target Details

Background: Phosphofructokinase catalyzes the irreversible conversion of fructose 6 phosphate to fructose 1,6 bisphosphate. Mammalian PFK is a complex isozyme consisting of 3 subunits: muscle (M), liver (L), and platelet (P). Only M type PFK isozyme is expressed in mature muscle, while erythrocytes contain both L and M subunits. Defects in PFKM are the cause of glycogen storage disease type 7 (GSD7), also known as Tarui disease. Synonyms: 6-phosphofructokinase muscle type, GSD7, PFK-1, PFK-A, PFK1, PFKX, Phosphofructo-1-kinase isozyme A, Phosphofructokinase 1, Phosphofructokinase-M, Phosphohexokinase

Gene ID: 5213, 9606

UniProt: [P08237](#)

Pathways: [Positive Regulation of Peptide Hormone Secretion](#), [Negative Regulation of Hormone Secretion](#), [Carbohydrate Homeostasis](#), [Warburg Effect](#)

Application Details

Application Notes: ELISA: 1/1,000. Western blotting: 1/100 - 1/500. Immunohistochemistry: 1/50 - 1/100.
Other applications not tested.
Optimal dilutions are dependent on conditions and should be determined by the user.

Restrictions: For Research Use only

Handling

Format: Liquid

Concentration: 0.25 mg/mL

Buffer: PBS with 0.09 % (W/V) sodium azide

Preservative: Sodium azide

Precaution of Use: This product contains sodium azide: a POISONOUS AND HAZARDOUS SUBSTANCE which should be handled by trained staff only.

Handling Advice: Avoid repeated freezing and thawing.

Storage: 4 °C/-20 °C

Storage Comment: Store the antibody undiluted at 2-8 °C for one month or (in aliquots) at -20 °C for longer.

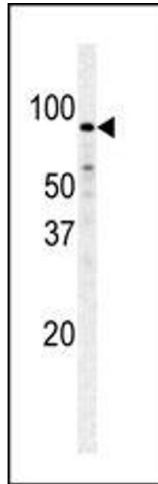


Image 1.

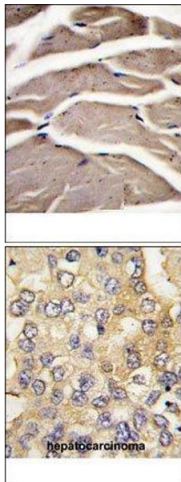


Image 2.