

Datasheet for ABIN360658  
**anti-EPS8 antibody (N-Term)**

## 2 Images

[Go to Product page](#)

## Overview

Quantity:	0.4 mL
Target:	EPS8
Binding Specificity:	N-Term
Reactivity:	Human
Host:	Rabbit
Clonality:	Polyclonal
Conjugate:	This EPS8 antibody is un-conjugated
Application:	Western Blotting (WB), Immunohistochemistry (Paraffin-embedded Sections) (IHC (p)), Enzyme Immunoassay (EIA)

## Product Details

Immunogen:	This antibody is generated from rabbits immunized with a KLH conjugated synthetic peptide selected from the N-terminal region of human EPS8.
Isotype:	Ig Fraction
Specificity:	This antibody reacts to EPS8.
Purification:	Protein G column, eluted with high and low pH buffers and neutralized immediately, followed by dialysis against PBS

## Target Details

Target:	EPS8
Alternative Name:	EPS8 ( <a href="#">EPS8 Products</a> )

## Target Details

Background:	Upon binding to EGF receptor, EPS8 enhances EGF-dependent mitogenic signals. It can bind multiple cellular targets. EPS8 is expressed in all tissues analyzed, including heart, brain, placenta, lung, liver, skeletal muscle, kidney, and pancreas. It is expressed in all epithelial and fibroblastic lines examined and in some, but not all, hematopoietic cells. EPS8 is phosphorylated by several receptor tyrosine kinases. The protein contains 1 PH domain and 1 SH3 domain.Synonyms: Epidermal growth factor receptor kinase substrate 8
Gene ID:	2059, 9606
UniProt:	<a href="#">Q12929</a>
Pathways:	<a href="#">EGFR Signaling Pathway</a> , <a href="#">Regulation of Actin Filament Polymerization</a>

## Application Details

Application Notes:	ELISA: 1/1,000. Western blotting: 1/100 - 1/500. Immunohistochemistry: 1/50 - 1/100. Other applications not tested. Optimal dilutions are dependent on conditions and should be determined by the user.
Restrictions:	For Research Use only

## Handling

Format:	Liquid
Concentration:	0.25 mg/mL
Buffer:	PBS with 0.09 % (W/V) sodium azide
Preservative:	Sodium azide
Precaution of Use:	This product contains sodium azide: a POISONOUS AND HAZARDOUS SUBSTANCE which should be handled by trained staff only.
Handling Advice:	Avoid repeated freezing and thawing.
Storage:	4 °C/-20 °C
Storage Comment:	Store the antibody undiluted at 2-8 °C for one month or (in aliquots) at -20 °C for longer.

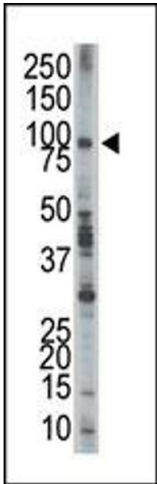


Image 1.

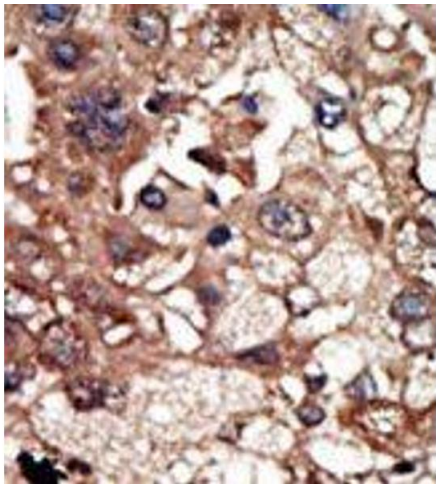


Image 2.