

## Datasheet for ABIN360670 anti-PFKFB4 antibody (AA 274-303)



[Go to Product page](#)

### 3 Images

#### Overview

Quantity:	0.4 mL
Target:	PFKFB4
Binding Specificity:	AA 274-303
Reactivity:	Human, Mouse
Host:	Rabbit
Clonality:	Polyclonal
Conjugate:	This PFKFB4 antibody is un-conjugated
Application:	Western Blotting (WB), Immunohistochemistry (Paraffin-embedded Sections) (IHC (p)), Enzyme Immunoassay (EIA)

#### Product Details

Immunogen:	KLH conjugated synthetic peptide between 274~303 amino acids from the center region of Human PFKFB4.
Isotype:	Ig Fraction
Specificity:	This antibody recognizes Human and Mouse PFKFB4.
Purification:	Protein G Chromatography, eluted with high and low pH buffers and neutralized immediately, followed by dialysis against PBS

#### Target Details

Target:	PFKFB4
Alternative Name:	PFKFB4 ( <a href="#">PFKFB4 Products</a> )

## Target Details

Background:	Protein kinases are enzymes that transfer a phosphate group from a phosphate donor, generally the $\gamma$ phosphate of ATP, onto an acceptor amino acid in a substrate protein. By this basic mechanism, protein kinases mediate most of the signal transduction in eukaryotic cells, regulating cellular metabolism, transcription, cell cycle progression, cytoskeletal rearrangement and cell movement, apoptosis, and differentiation. With more than 500 gene products, the protein kinase family is one of the largest families of proteins in eukaryotes. The family has been classified in 8 major groups based on sequence comparison of their tyrosine (PTK) or serine/threonine (STK) kinase catalytic domains. The AGC kinase group consists of 63 kinases including the cyclic nucleotide-regulated protein kinase (PKA & PKG) family, the diacylglycerol-activated/phospholipid-dependent protein kinase C (PKC) family, the related to PKA and PKC (RAC/Akt) protein kinase family, the kinases that phosphorylate G protein-coupled receptors family (ARK), and the kinases that phosphorylate ribosomal protein S6 family (RSK). Synonyms: 6-P2ase testis-type isozyme, 6-biphosphatase 4, 6-phosphofructo-2-kinase, 6PF-2-K, Fru-2, PFK/FBPase 4, fructose-2
-------------	---

Gene ID:	5210, 9606
----------	------------

UniProt:	<a href="#">Q16877</a>
----------	------------------------

## Application Details

Application Notes:	ELISA: 1/1,000. Western blotting: 1/100 - 1/500. Immunohistochemistry: 1/50 - 1/100. Other applications not tested. Optimal dilutions are dependent on conditions and should be determined by the user.
--------------------	---

Restrictions:	For Research Use only
---------------	-----------------------

## Handling

Format:	Liquid
Concentration:	0.25 mg/mL
Buffer:	PBS, 0.09 % Sodium Azide
Preservative:	Sodium azide
Precaution of Use:	This product contains sodium azide: a POISONOUS AND HAZARDOUS SUBSTANCE which should be handled by trained staff only.
Handling Advice:	Avoid repeated freezing and thawing.
Storage:	4 °C/-20 °C

Handling

Storage Comment: Store undiluted at 2-8 °C for one month or (in aliquots) at -20 °C for longer.

Images

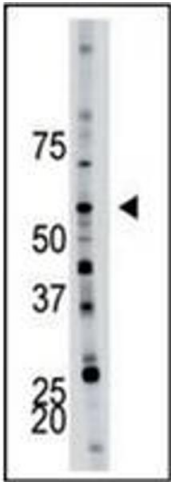


Image 1.



Image 2.

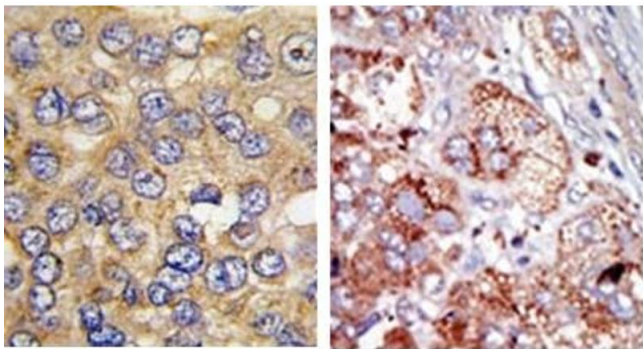


Image 3.