

Datasheet for ABIN360704
anti-MAGI1 antibody (C-Term)

2 Images

[Go to Product page](#)

Overview

Quantity:	0.4 mL
Target:	MAGI1
Binding Specificity:	C-Term
Reactivity:	Human
Host:	Rabbit
Clonality:	Polyclonal
Conjugate:	This MAGI1 antibody is un-conjugated
Application:	Western Blotting (WB), Immunohistochemistry (Paraffin-embedded Sections) (IHC (p)), Enzyme Immunoassay (EIA)

Product Details

Immunogen:	This antibody is generated from rabbits immunized with a KLH conjugated synthetic peptide selected from the C-terminal region of human BAIAP1.
Isotype:	Ig Fraction
Specificity:	This antibody reacts to BAIAP1.
Purification:	Protein G column, eluted with high and low pH buffers and neutralized immediately, followed by dialysis against PBS

Target Details

Target:	MAGI1
Alternative Name:	MAGI1 / BAIAP1 (MAGI1 Products)

Target Details

Background: BAIAP1 is a member of the membrane-associated guanylate kinase homologue (MAGUK) family. Characterized by two WW domains, a guanylate kinase domain, and five PDZ domains, this protein interacts with the cytoplasmic region of BAI1. Together, these proteins may play a role in cell adhesion and signal transduction. Synonyms: AIP-3, AIP3, Atrophin-1-interacting protein 3, BAI1-associated protein 1, BAP-1, BAP1, MAGI-1, Membrane-associated guanylate kinase, Membrane-associated guanylate kinase inverted 1, TNRC19, Trinucleotide repeat-containing gene 19 protein, WW and PDZ domain-containing protein 1, WWP3

Gene ID: 9223

NCBI Accession: [NP_001028229](#)

UniProt: [Q96QZ7](#)

Application Details

Application Notes: ELISA: 1/1,000. Western blotting: 1/100 - 1/500. Immunohistochemistry: 1/50 - 1/100.
Other applications not tested.
Optimal dilutions are dependent on conditions and should be determined by the user.

Restrictions: For Research Use only

Handling

Format: Liquid

Concentration: 0.25 mg/mL

Buffer: PBS with 0.09 % (W/V) sodium azide

Preservative: Sodium azide

Precaution of Use: This product contains sodium azide: a POISONOUS AND HAZARDOUS SUBSTANCE which should be handled by trained staff only.

Handling Advice: Avoid repeated freezing and thawing.

Storage: 4 °C/-20 °C

Storage Comment: Store the antibody undiluted at 2-8 °C for one month or (in aliquots) at -20 °C for longer.

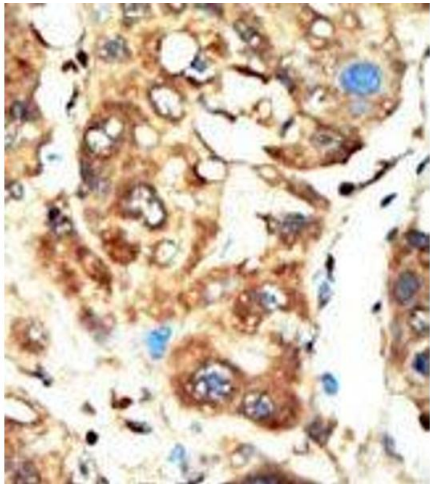


Image 1.

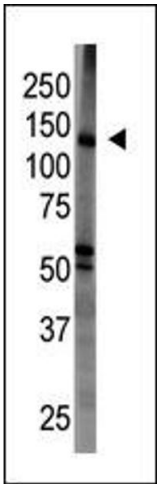


Image 2.