

Datasheet for ABIN360761
anti-PPP1CB antibody (C-Term)



[Go to Product page](#)

1 Image

Overview

Quantity:	0.4 mL
Target:	PPP1CB
Binding Specificity:	C-Term
Reactivity:	Human, Mouse
Host:	Rabbit
Clonality:	Polyclonal
Conjugate:	This PPP1CB antibody is un-conjugated
Application:	Western Blotting (WB), Enzyme Immunoassay (EIA)

Product Details

Immunogen:	This antibody is generated from rabbits immunized with a KLH conjugated synthetic peptide selected from the C-terminal region of human PPP1CB.
Isotype:	Ig Fraction
Specificity:	This antibody reacts to PPP1CB.
Purification:	Protein G column, eluted with high and low pH buffers and neutralized immediately, followed by dialysis against PBS

Target Details

Target:	PPP1CB
Alternative Name:	PPP1CB (PPP1CB Products)

Target Details

Background:	Protein phosphatase-1 (PP1) is 1 of 4 major serine/threonine-specific protein phosphatases involved in the dephosphorylation of a variety of proteins. These enzymes work in opposition to the protein kinases to control the level of phosphorylation. Protein phosphatase (PP1) is essential for cell division, and it participates in the regulation of glycogen metabolism, muscle contractility and protein synthesis, as well as in regulation of ionic conductances and long-term synaptic plasticity. PP1 has 3 catalytic subunits, designated alpha (PPP1CA), beta (PPP1CB), and gamma (PPP1CC).Synonyms: PP-1B, PP1beta, PPP1CD, Protein phosphatase 1-beta, Protein phosphatase 1-delta, Serine/threonine-protein phosphatase PP1-beta catalytic subunit
Gene ID:	5500, 9606
UniProt:	P62140
Pathways:	M Phase , Cellular Glucan Metabolic Process , Regulation of Carbohydrate Metabolic Process , Lipid Metabolism

Application Details

Application Notes:	ELISA: 1/1,000. Western blotting: 1/100 - 1/500. Flow cytometry Other applications not tested. Optimal dilutions are dependent on conditions and should be determined by the user.
Restrictions:	For Research Use only

Handling

Format:	Liquid
Concentration:	0.25 mg/mL
Buffer:	PBS with 0.09 % (W/V) sodium azide
Preservative:	Sodium azide
Precaution of Use:	This product contains sodium azide: a POISONOUS AND HAZARDOUS SUBSTANCE which should be handled by trained staff only.
Handling Advice:	Avoid repeated freezing and thawing.
Storage:	4 °C/-20 °C
Storage Comment:	Store the antibody undiluted at 2-8 °C for one month or (in aliquots) at -20 °C for longer.

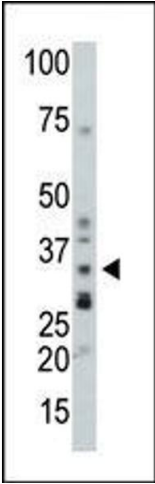


Image 1.