



[Go to Product page](#)

Datasheet for ABIN360778

## anti-DUSP4 antibody (C-Term)

### 2 Images

#### Overview

Quantity:	0.4 mL
Target:	DUSP4
Binding Specificity:	C-Term
Reactivity:	Human, Mouse
Host:	Rabbit
Clonality:	Polyclonal
Conjugate:	This DUSP4 antibody is un-conjugated
Application:	Western Blotting (WB), Immunohistochemistry (Paraffin-embedded Sections) (IHC (p)), Enzyme Immunoassay (EIA)

#### Product Details

Immunogen:	This antibody is generated from rabbits immunized with a KLH conjugated synthetic peptide selected from the C-terminal region of human DUSP4.
Isotype:	Ig Fraction
Specificity:	This antibody reacts to DUSP4.
Purification:	Protein G column, eluted with high and low pH buffers and neutralized immediately, followed by dialysis against PBS

#### Target Details

Target:	DUSP4
Alternative Name:	DUSP4 ( <a href="#">DUSP4 Products</a> )

## Target Details

---

**Background:** DUSP4 is a member of the dual specificity protein phosphatase subfamily. These phosphatases inactivate their target kinases by dephosphorylating both the phosphoserine/threonine and phosphotyrosine residues. They negatively regulate members of the mitogen-activated protein (MAP) kinase superfamily (MAPK/ERK, SAPK/JNK, p38), which are associated with cellular proliferation and differentiation. Different members of the family of dual specificity phosphatases show distinct substrate specificities for various MAP kinases, different tissue distribution and subcellular localization, and different modes of inducibility of their expression by extracellular stimuli. DUSP4 inactivates ERK1, ERK2 and JNK, is expressed in a variety of tissues, and is localized in the nucleus. Synonyms: Dual specificity protein phosphatase 4, Dual specificity protein phosphatase hVH2, MKP2, Mitogen-activated protein kinase phosphatase 2, VH2

**Gene ID:** 1846, 9606

**UniProt:** [Q13115](#)

**Pathways:** [Neurotrophin Signaling Pathway](#), [Activation of Innate immune Response](#), [Toll-Like Receptors Cascades](#)

## Application Details

---

**Application Notes:** ELISA: 1/1,000. Western blotting: 1/100 - 1/500. Immunohistochemistry: 1/50 - 1/100. Other applications not tested. Optimal dilutions are dependent on conditions and should be determined by the user.

**Restrictions:** For Research Use only

## Handling

---

**Format:** Liquid

**Concentration:** 0.25 mg/mL

**Buffer:** PBS with 0.09 % (W/V) sodium azide

**Preservative:** Sodium azide

**Precaution of Use:** This product contains sodium azide: a POISONOUS AND HAZARDOUS SUBSTANCE which should be handled by trained staff only.

**Handling Advice:** Avoid repeated freezing and thawing.

**Storage:** 4 °C/-20 °C

## Handling

Storage Comment: Store the antibody undiluted at 2-8 °C for one month or (in aliquots) at -20 °C for longer.

## Images

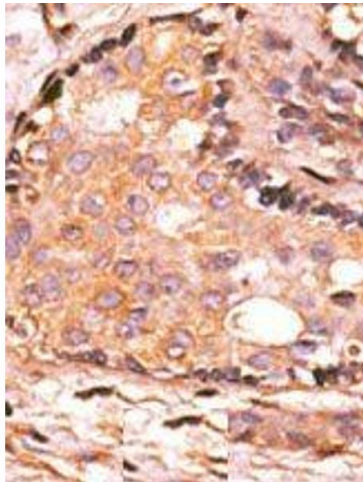
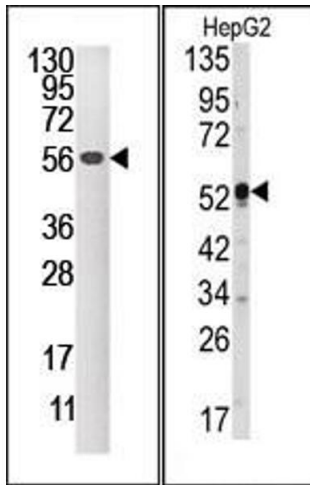


Image 1.

Image 2.