



[Go to Product page](#)

Datasheet for ABIN360788

anti-DUSP10 antibody (N-Term)

2 Images

Overview

Quantity:	0.4 mL
Target:	DUSP10
Binding Specificity:	N-Term
Reactivity:	Human, Mouse
Host:	Rabbit
Clonality:	Polyclonal
Conjugate:	This DUSP10 antibody is un-conjugated
Application:	Western Blotting (WB), Immunohistochemistry (Paraffin-embedded Sections) (IHC (p)), Enzyme Immunoassay (EIA)

Product Details

Immunogen:	This antibody is generated from rabbits immunized with a KLH conjugated synthetic peptide selected from the N-terminal region of human DUSP10.
Isotype:	Ig Fraction
Specificity:	This antibody reacts to DUSP10.
Purification:	Protein G column, eluted with high and low pH buffers and neutralized immediately, followed by dialysis against PBS

Target Details

Target:	DUSP10
Alternative Name:	DUSP10 / MKP5 (DUSP10 Products)

Target Details

Background: Dual specificity protein phosphatases inactivate their target kinases by dephosphorylating both the phosphoserine/threonine and phosphotyrosine residues. They negatively regulate members of the MAPK superfamily (MAPK/ERK, SAPK/JNK, p38), which is associated with cellular proliferation and differentiation. Different members of this family of dual specificity phosphatases show distinct substrate specificities for MAPKs, different tissue distribution and subcellular localization, and different modes of inducibility of their expression by extracellular stimuli. DUSP10 binds to and inactivates p38 and SAPK/JNK, but not MAPK/ERK. Its subcellular localization is unique, it is evenly distributed in both the cytoplasm and the nucleus. The protein is widely expressed in various tissues and organs, and its expression is elevated by stress stimuli. **Synonyms:** Dual specificity protein phosphatase 10, MAP kinase phosphatase 5, MKP-5, Mitogen-activated protein kinase phosphatase 5

Gene ID: 11221, 9606

UniProt: [Q9Y6W6](#)

Application Details

Application Notes: ELISA: 1/1,000. Western blotting: 1/100 - 1/500. Immunohistochemistry: 1/50 - 1/100. Other applications not tested. Optimal dilutions are dependent on conditions and should be determined by the user.

Restrictions: For Research Use only

Handling

Format: Liquid

Concentration: 0.25 mg/mL

Buffer: PBS with 0.09 % (W/V) sodium azide

Preservative: Sodium azide

Precaution of Use: This product contains sodium azide: a POISONOUS AND HAZARDOUS SUBSTANCE which should be handled by trained staff only.

Handling Advice: Avoid repeated freezing and thawing.

Storage: 4 °C/-20 °C

Storage Comment: Store the antibody undiluted at 2-8 °C for one month or (in aliquots) at -20 °C for longer.

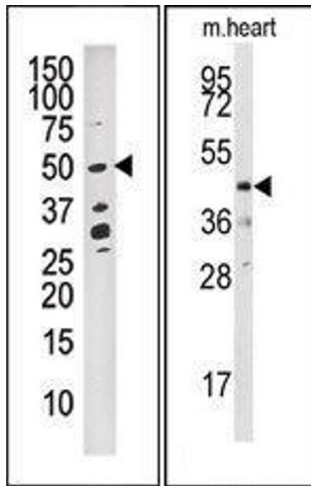


Image 1.

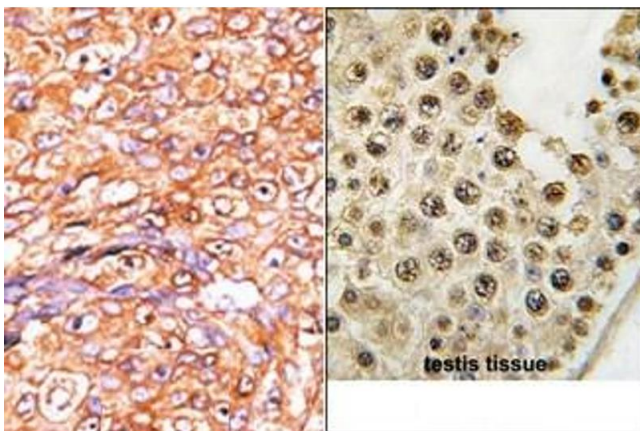


Image 2.