

Datasheet for ABIN360802
anti-CTDSP2 antibody (N-Term)[Go to Product page](#)

2 Images

Overview

Quantity:	0.4 mL
Target:	CTDSP2
Binding Specificity:	N-Term
Reactivity:	Human, Mouse
Host:	Rabbit
Clonality:	Polyclonal
Conjugate:	This CTDSP2 antibody is un-conjugated
Application:	Western Blotting (WB), Immunohistochemistry (Paraffin-embedded Sections) (IHC (p)), Enzyme Immunoassay (EIA)

Product Details

Immunogen:	This antibody is generated from rabbits immunized with a KLH conjugated synthetic peptide selected from the N-terminal region of human CTDSP2.
Isotype:	Ig Fraction
Specificity:	This antibody reacts to CTDSP2.
Purification:	Prepared by Saturated Ammonium Sulfate (SAS) precipitation followed by dialysis against PBS

Target Details

Target:	CTDSP2
Alternative Name:	CTDSP2 (CTDSP2 Products)

Target Details

Background:	CTDSP2 is one of several small CTD phosphatases (SCP). It has been proposed that SCP activity is an evolutionarily conserved transcriptional regulator that acts globally to silence neuronal genes. In addition, expression of phosphatase CTDSP2 mRNA is enhanced in several cancer cell lines with amplification of the CTDSP2 and CDK4 genes, and CTDSP2 coamplifies with CDK4 in some primary sarcomas. CTDSP2 may contribute to the development of a subset of sarcomas. Synonyms: Carboxy-terminal domain RNA polymerase II polypeptide A small phosphatase 2, NLI-interacting factor 2, Nuclear LIM interactor-interacting factor 2, Protein OS-4, SCP2, Small CTD phosphatase 2
Gene ID:	10106
NCBI Accession:	NP_005721
UniProt:	O14595
Pathways:	ER-Nucleus Signaling

Application Details

Application Notes:	ELISA: 1/1,000. Western Blot: 1/100 - 1/250. Immunohistochemistry: 1/50 - 1/100. Other applications not tested. Optimal dilutions are dependent on conditions and should be determined by the user.
Restrictions:	For Research Use only

Handling

Format:	Liquid
Concentration:	0.25 mg/mL
Buffer:	PBS with 0.09 % (W/V) sodium azide
Preservative:	Sodium azide
Precaution of Use:	This product contains sodium azide: a POISONOUS AND HAZARDOUS SUBSTANCE which should be handled by trained staff only.
Handling Advice:	Avoid repeated freezing and thawing.
Storage:	4 °C/-20 °C
Storage Comment:	Store the antibody undiluted at 2-8 °C for one month or (in aliquots) at -20 °C for longer.

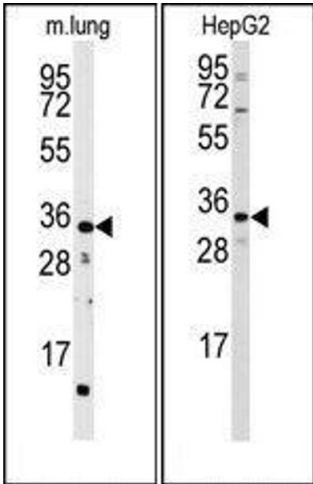


Image 1.

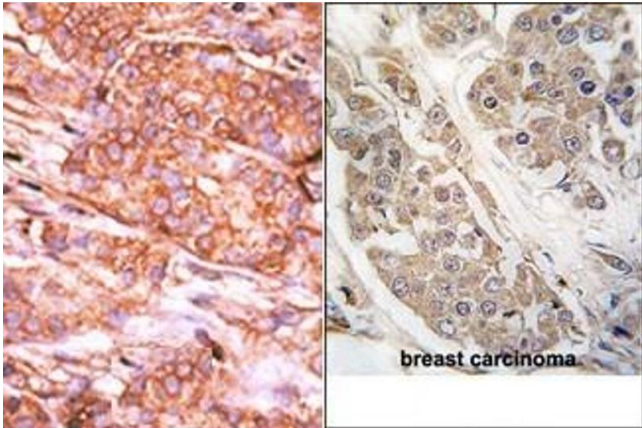


Image 2.