

Datasheet for ABIN360840

**anti-Dual Specificity Phosphatase 3 (DUSP3) (N-Term)
antibody**[Go to Product page](#)**2** Images

Overview

Quantity:	0.4 mL
Target:	Dual Specificity Phosphatase 3 (DUSP3)
Binding Specificity:	N-Term
Reactivity:	Human
Host:	Rabbit
Clonality:	Polyclonal
Conjugate:	Un-conjugated
Application:	Western Blotting (WB), Immunohistochemistry (Paraffin-embedded Sections) (IHC (p)), Enzyme Immunoassay (EIA)

Product Details

Immunogen:	This antibody is generated from rabbits immunized with a KLH conjugated synthetic peptide selected from the N-terminal region of human DUSP3.
Isotype:	Ig Fraction
Specificity:	This antibody reacts to DUSP3.
Purification:	Prepared by Saturated Ammonium Sulfate (SAS) precipitation followed by dialysis against PBS

Target Details

Target:	Dual Specificity Phosphatase 3 (DUSP3)
Alternative Name:	DUSP3 (DUSP3 Products)

Target Details

Target Type:	Viral Protein
Background:	DUSP3 is a member of the dual specificity protein phosphatase subfamily. These phosphatases inactivate their target kinases by dephosphorylating both the phosphoserine/threonine and phosphotyrosine residues. They negatively regulate members of the mitogen-activated protein (MAP) kinase superfamily (MAPK/ERK, SAPK/JNK, p38), which are associated with cellular proliferation and differentiation. Different members of the family of dual specificity phosphatases show distinct substrate specificities for various MAP kinases, different tissue distribution and subcellular localization, and different modes of inducibility of their expression by extracellular stimuli.Synonyms: Dual specificity protein phosphatase 3, Dual specificity protein phosphatase VHR, VHR, Vaccinia H1-related phosphatase
Gene ID:	1845, 9606
UniProt:	P51452
Pathways:	Neurotrophin Signaling Pathway , Activation of Innate immune Response , Toll-Like Receptors Cascades

Application Details

Application Notes:	ELISA: 1/1,000. Western Blot: 1/100 - 1/500. Immunohistochemistry: 1/50 - 1/100. Other applications not tested. Optimal dilutions are dependent on conditions and should be determined by the user.
Restrictions:	For Research Use only

Handling

Format:	Liquid
Concentration:	0.25 mg/mL
Buffer:	PBS with 0.09 % (W/V) sodium azide
Preservative:	Sodium azide
Precaution of Use:	This product contains sodium azide: a POISONOUS AND HAZARDOUS SUBSTANCE which should be handled by trained staff only.
Handling Advice:	Avoid repeated freezing and thawing.
Storage:	4 °C/-20 °C
Storage Comment:	Store the antibody undiluted at 2-8 °C for one month or (in aliquots) at-20 °C for longer.

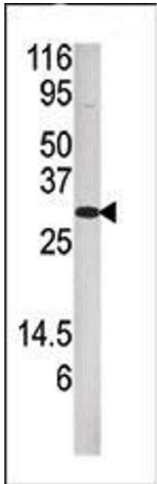


Image 1.

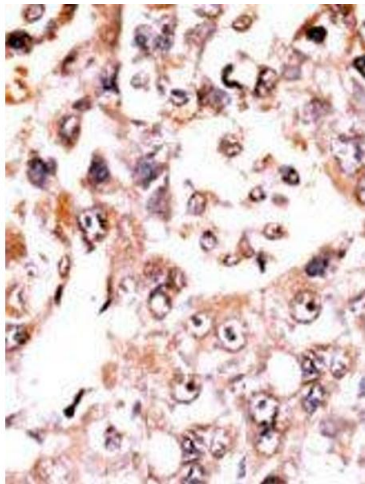


Image 2.