

Datasheet for ABIN361187
anti-GCKR antibody (N-Term)[Go to Product page](#)

1 Image

Overview

Quantity:	100 µg
Target:	GCKR
Binding Specificity:	N-Term
Reactivity:	Rat, Mouse
Host:	Goat
Clonality:	Polyclonal
Conjugate:	This GCKR antibody is un-conjugated
Application:	Western Blotting (WB), ELISA

Product Details

Purpose:	GCKR
Immunogen:	Peptide with sequence KRFQHVIETPEPGK -C, from the N Terminus of the protein sequence according to NP_001477.1.
Sequence:	KRFQHVIETP EPGK
Isotype:	IgG
Cross-Reactivity:	Human, Mouse, Rat
Purification:	Purified from goat serum by ammonium sulphate precipitation followed by antigen affinity chromatography using the immunizing peptide.
Grade:	Verified

Target Details

Target:	GCKR
Alternative Name:	GCKR (GCKR Products)
Background:	GCKR, glucokinase (hexokinase 4) regulator, GKRP, glucokinase (hexokinase 4) regulatory protein, glucokinase regulator, glucokinase regulatory protein, hexokinase 4
Gene ID:	2646, 231103, 25658
NCBI Accession:	NP_001477
Pathways:	Carbohydrate Homeostasis , Regulation of Carbohydrate Metabolic Process , Protein targeting to Nucleus

Application Details

Application Notes:	Western Blot: Approx 70 kDa band observed in Mouse and Rat Liver lysates (calculated MW of 68.7 kDa according to Human NP_001477.1 and of 68.9 kDa according to Rat NP_037252.1). Recommended concentration: 0.1-0.3 µg/mL. Peptide ELISA: antibody detection limit dilution 1:8000.
Restrictions:	For Research Use only

Handling

Format:	Liquid
Concentration:	0.5 mg/mL
Buffer:	Supplied at 0.5 mg/mL in Tris saline, 0.02 % sodium azide, pH 7.3 with 0.5 % bovine serum albumin.
Preservative:	Sodium azide
Precaution of Use:	This product contains Sodium azide: a POISONOUS AND HAZARDOUS SUBSTANCE which should be handled by trained staff only.
Handling Advice:	Minimize freezing and thawing.
Storage:	-20 °C
Storage Comment:	Aliquot and store at -20°C, with minimal freeze/thawing. A working aliquot may be refrigerated at 4°C for a few weeks and still remain viable.

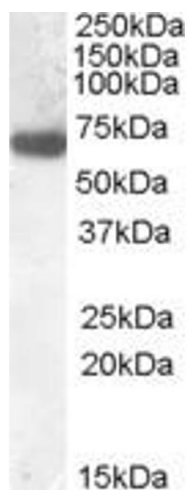


Image 1. EB09275 (0.1µg/ml) staining of Rat Liver lysate (35µg protein in RIPA buffer). Primary incubation was 1 hour. Detected by chemiluminescence.