

Datasheet for ABIN361190
anti-DLL1 antibody (Internal Region)

7 Images

[Go to Product page](#)

Overview

Quantity:	100 µg
Target:	DLL1
Binding Specificity:	Internal Region
Reactivity:	Human, Rat
Host:	Goat
Clonality:	Polyclonal
Conjugate:	This DLL1 antibody is un-conjugated
Application:	Western Blotting (WB), ELISA, Flow Cytometry (FACS), Immunofluorescence (IF)

Product Details

Purpose:	DLL1
Immunogen:	Peptide with sequence C-ATQRHLTVGEEWSQD, from the internal region of the protein sequence according to NP_005609.3
Sequence:	ATQRHLTVGE EWSQD
Isotype:	IgG
Cross-Reactivity:	Human, Mouse, Rat
Purification:	Purified from goat serum by ammonium sulphate precipitation followed by antigen affinity chromatography using the immunizing peptide.
Grade:	Verified

Target Details

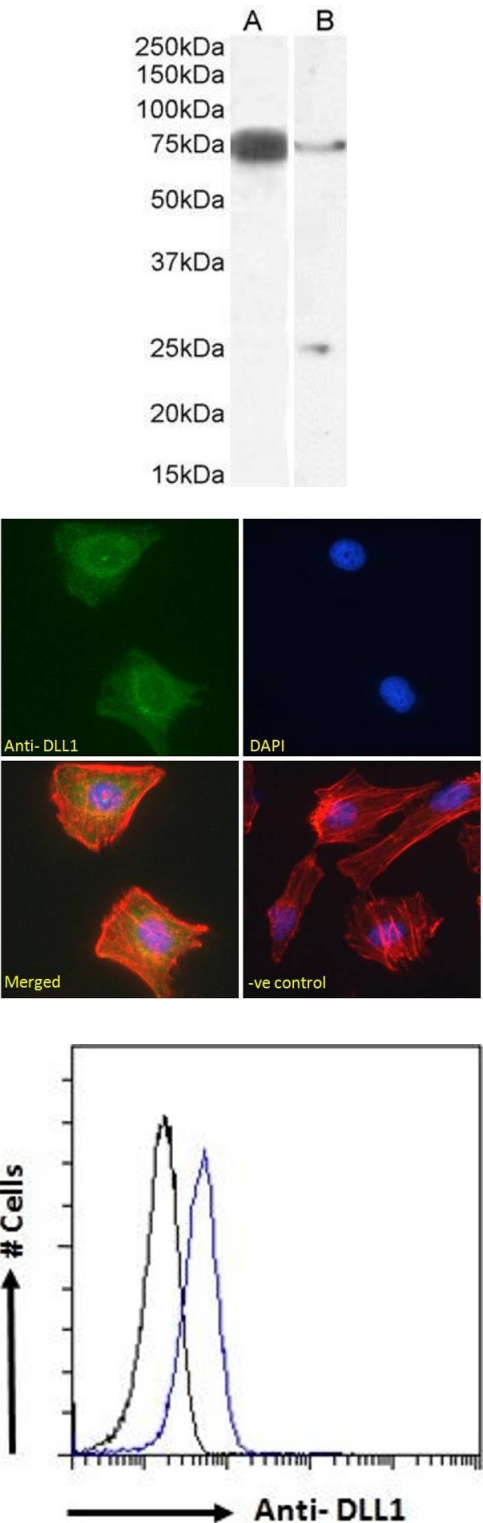
Target:	DLL1
Alternative Name:	DLL1 (DLL1 Products)
Background:	DLL1, delta-like 1 (Drosophila), DELTA1, DL1, Delta, OTTHUMP00000017690, delta (Drosophila)-like 1, delta-like 1, delta-like 1 protein
Gene ID:	28514, 13388, 84010
NCBI Accession:	NP_005609
Pathways:	Notch Signaling , Stem Cell Maintenance

Application Details

Application Notes:	Western Blot: Approx 75 kDa band observed in Mouse Heart and Rat Pancreas lysates (calculated MW of 78.5 kDa according to Mouse NP_031891.2 and 77.4 kDa according to Rat NP_114452.1). An additional band of unknown identity was also consistently observed at Peptide ELISA: antibody detection limit dilution 1:16000.
Comment:	Immunofluorescence: Strong expression of the protein seen in the cytoplasm/ membranes of HeLa cells. Recommended concentration: 10µg/ml. Flow Cytometry: Flow cytometric analysis of HeLa cells. Recommended concentration
Restrictions:	For Research Use only

Handling

Format:	Liquid
Concentration:	0.5 mg/mL
Buffer:	Supplied at 0.5 mg/mL in Tris saline, 0.02 % sodium azide, pH 7.3 with 0.5 % bovine serum albumin.
Preservative:	Sodium azide
Precaution of Use:	This product contains Sodium azide: a POISONOUS AND HAZARDOUS SUBSTANCE which should be handled by trained staff only.
Handling Advice:	Minimize freezing and thawing.
Storage:	-20 °C
Storage Comment:	Aliquot and store at -20°C, with minimal freeze/thawing. A working aliquot may be refrigerated at 4°C for a few weeks and still remain viable.



Western Blotting

Image 1. ABIN361190 (0.3µg/ml) staining of Mouse Heart (A) and (1ug/ml) Rat Pancreas (B) lysate (35µg protein in RIPA buffer). Detected by chemiluminescence.

Immunofluorescence

Image 2. ABIN361190 Immunofluorescence analysis of paraformaldehyde fixed HeLa cells, permeabilized with 0.15% Triton. Primary incubation 1hr (10ug/ml) followed by Alexa Fluor 488 secondary antibody (2ug/ml), showing cytoplasmic/membrane staining. Actin filaments were stained with phalloidin (red) and the nuclear stain is DAPI (blue). Negative control: Unimmunized goat IgG (10ug/ml) followed by Alexa Fluor 488 secondary antibody (2ug/ml).

Flow Cytometry

Image 3. ABIN361190 Flow cytometric analysis of paraformaldehyde fixed HeLa cells (blue line), permeabilized with 0.5% Triton. Primary incubation 1hr (10ug/ml) followed by Alexa Fluor 488 secondary antibody (1ug/ml). IgG control: Unimmunized goat IgG (black line) fol

Please check the [product details page](#) for more images. Overall 7 images are available for ABIN361190.